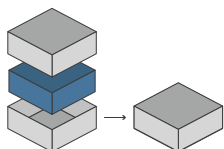




ORGANIZER - COMPATIBLE WITH REVIVE (ORGANIZER + PLAYER BOARD RISERS)



Designed to fit into the game box; flush closure is guaranteed. Progettato per inserirsi all'interno della scatola del gioco; garantisce chiusura a filo*



Designed for both sleeved and unsleeved cards. Adatto sia per carte imbustate che non imbustate*

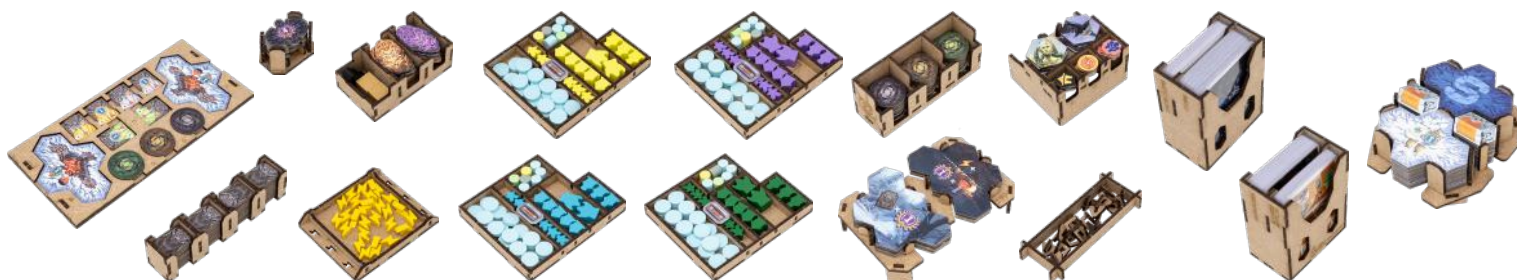
28.2 x 28.2 x 4.5 cm



Size of assembled organiser
Dimensioni organizer assemblato

ORGANIZER CAPACITY

4x player set boxes with slots for each piece type; 1x box for risers, with 16 pins; 2x map tiles trays, with spoiler free slots for campaign mode; 2x trays for campaign token, spoiler free; 2x module and machine trays, with dedicated slots; 1x energy tray; 1x artifacts and setup meeples tray; 1x endgame tokens tray; 2x card holders, with dedicated slots. 4x scatoline con set giocatore. Slot divisi per tipologia pezzi; 1x scatola per pin di alzata, con 16 pin; 2x tray per tessere mappa, con slot spoiler free per tessere campagna; 2x contenitori per tessere campagna, spoiler free; 2x contenitori per token modulo e macchina, con slot dedicati; 1x scatola per meeples energia; 1x contenitore per artefatti e meeples setup; 1x tray per token fine partita; 2x portacarte, con slot dedicati.



* Any doubt?
Check out our FAQ page or download the digital version of the instructions on our website!

All trademarks and copyrights are the property of their respective owners.
This product is not a toy. Contains small parts that can be swallowed or inhaled. 14+

thedictroyers.com



[/thedictroyers](https://www.facebook.com/thedictroyers)



[/thedictroyers](https://www.instagram.com/thedictroyers)



info@thedictroyers.com



8 055060 901875



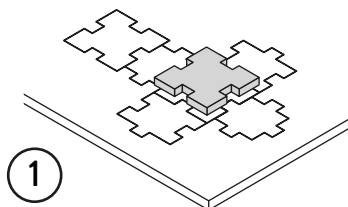
ORGANIZER - COMPATIBLE WITH
REVIVE - ORGANIZER + PLAYER BOARD RISERS



TUTORIAL - THE DICETROYERS DICE!

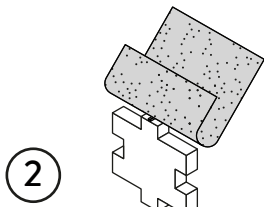
Among the pieces to assemble, you'll find a dice. This is not part of the organizer, but it can be a good starting point to practice!

Tra i materiali da assemblare troverai un dado. Questo componente non fa parte dell'organizer, né del gioco, ma è un ottimo punto di partenza per fare un po' di pratica.



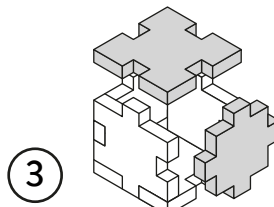
1

Gently take off
all the pieces.
Stacca delicatamente
dal foglio tutti i pezzi.



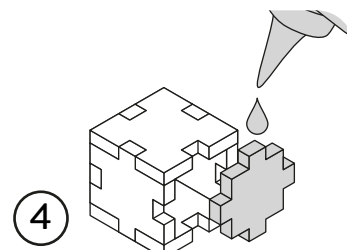
2

If necessary, use sand paper to
smoothen the borders.
Se necessario rifila con carta
vetrata per legno eventuali
imperfezioni dei pezzi.



3

Get familiar with
all the pieces
and check the correct assembly
sequence.
Prendi familiarità con tutti
i pezzi, per assicurarti
che la sequenza di assemblaggio sia
corretta.



4

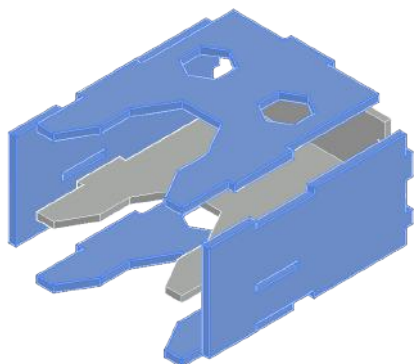
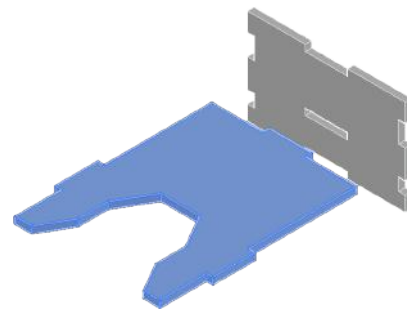
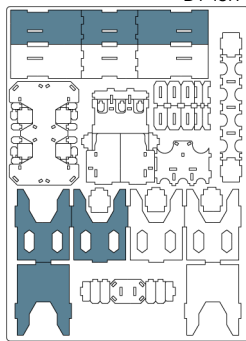
Once verified the correct assembly
sequence, just add a small quantity
of PVA glue on every joint.
Dopo aver verificato
la sequenza di assemblaggio
aggiungi una piccola quantità di
colla vinilica su tutti
gli incastri per garantirne
la durata nel tempo.

INSTRUCTIONS

A



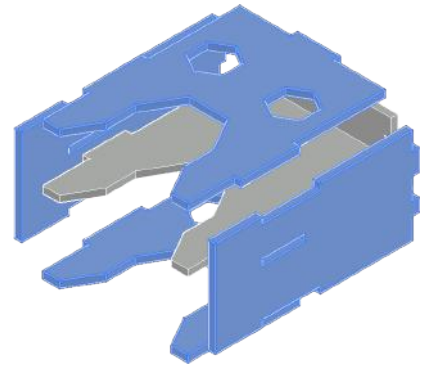
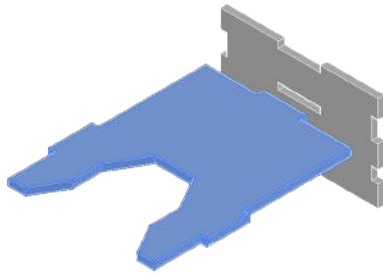
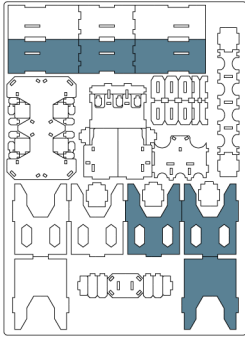
DT-137A



B



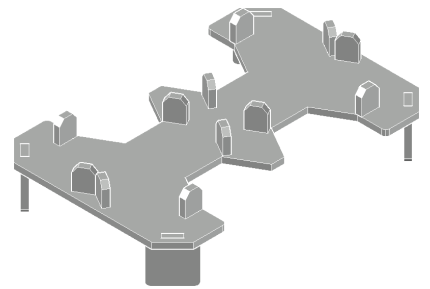
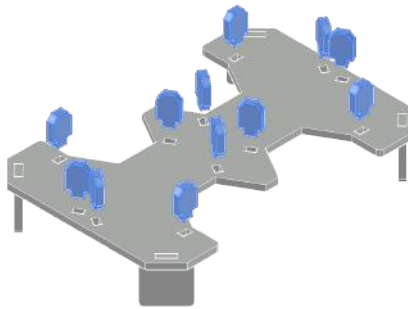
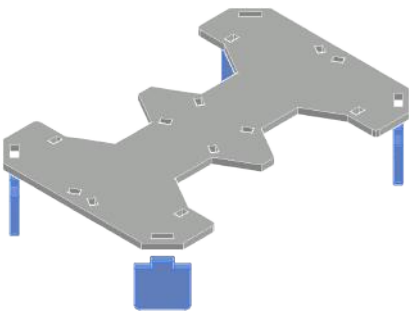
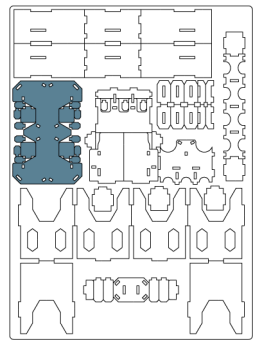
DT-137A



C



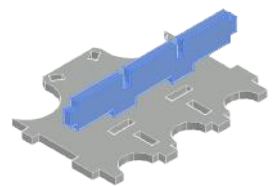
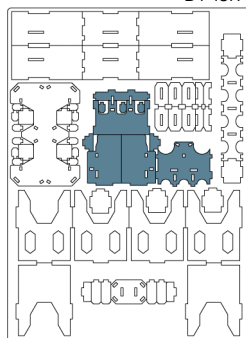
DT-137A

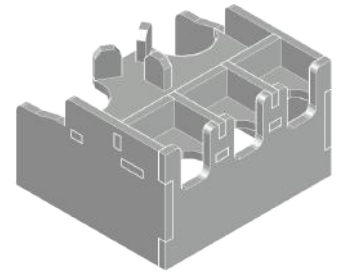
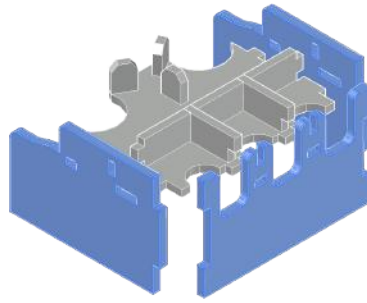
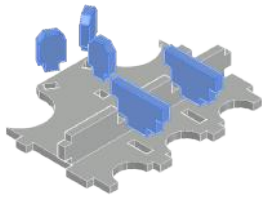


D

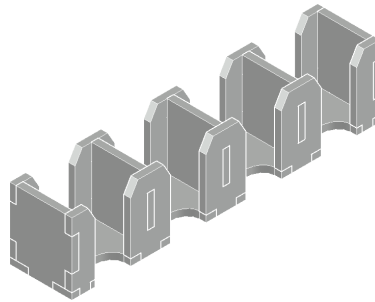
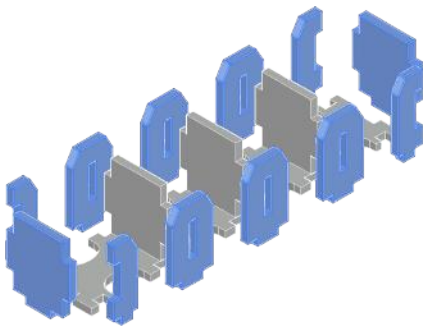
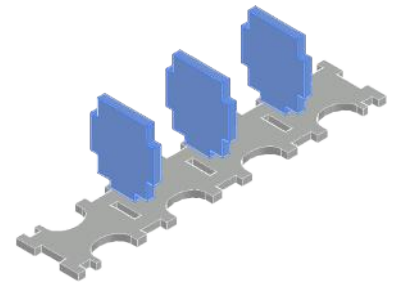
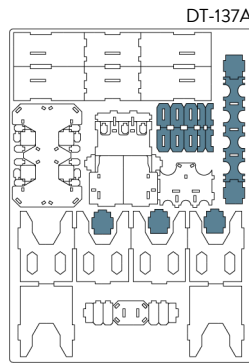


DT-137A

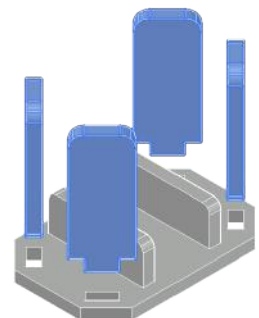
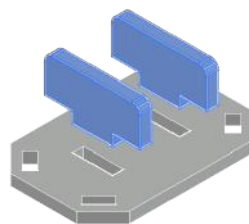
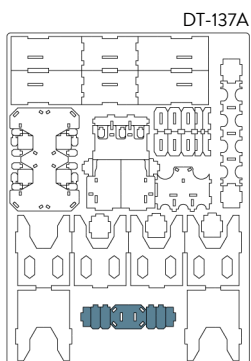


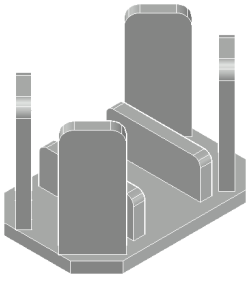


E



F

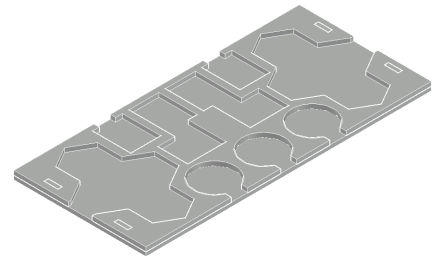
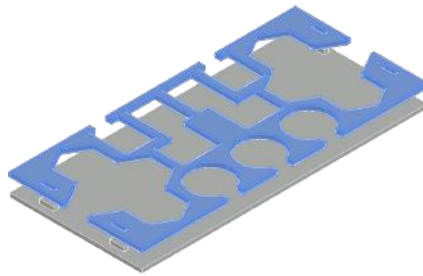
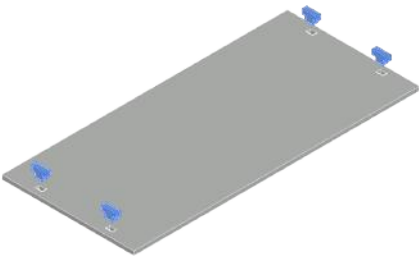
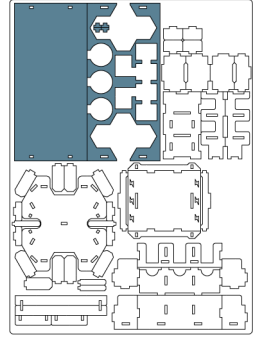




G



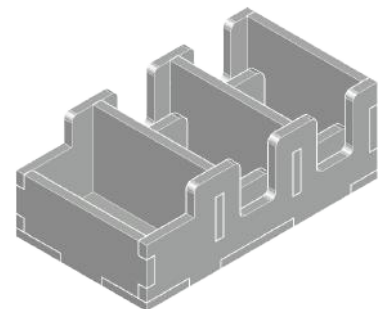
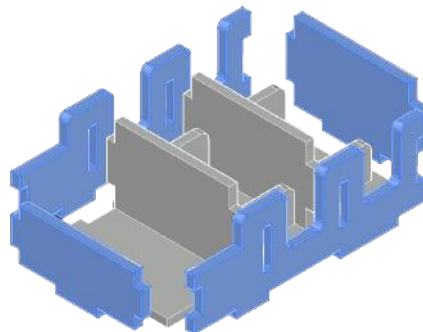
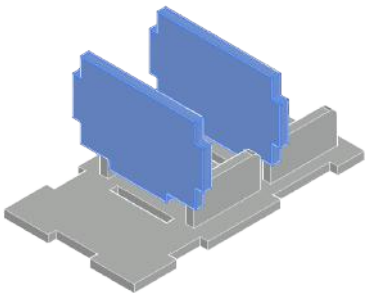
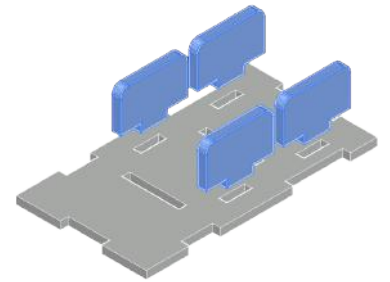
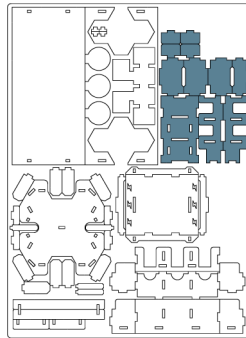
DT-137B



H



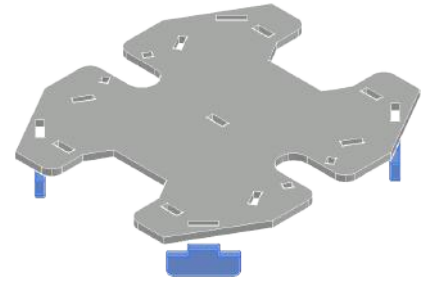
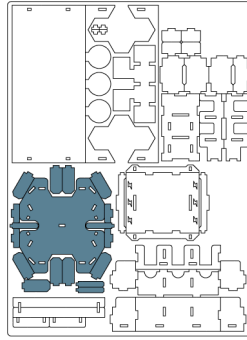
DT-137B



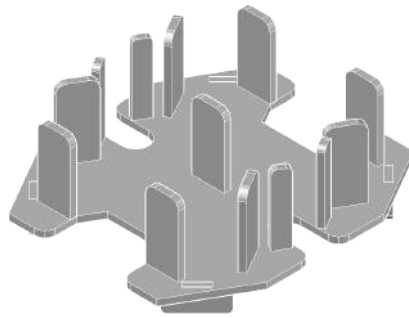
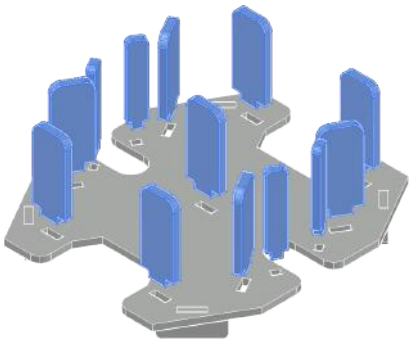
I



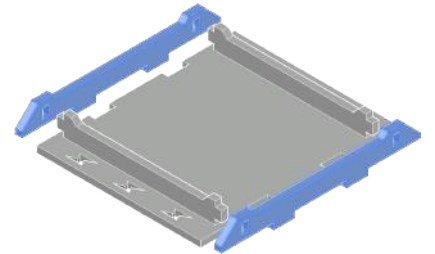
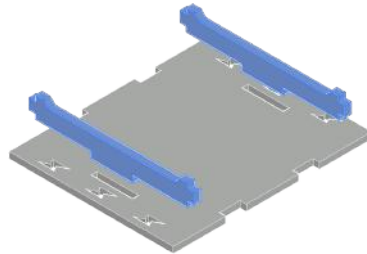
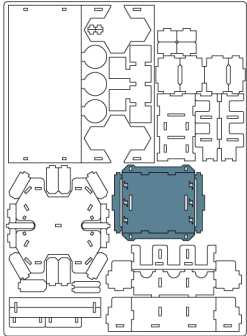
DT-137B



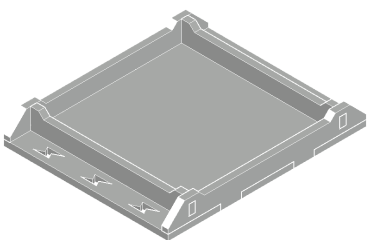
J



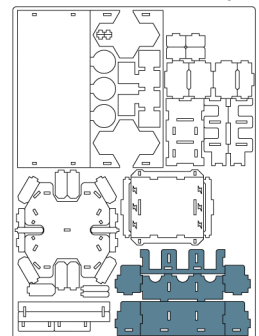
DT-137B

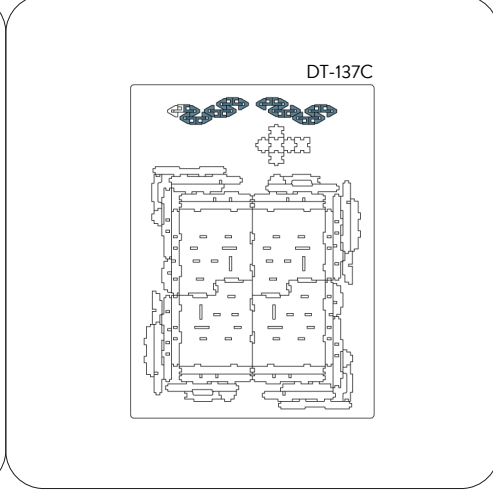
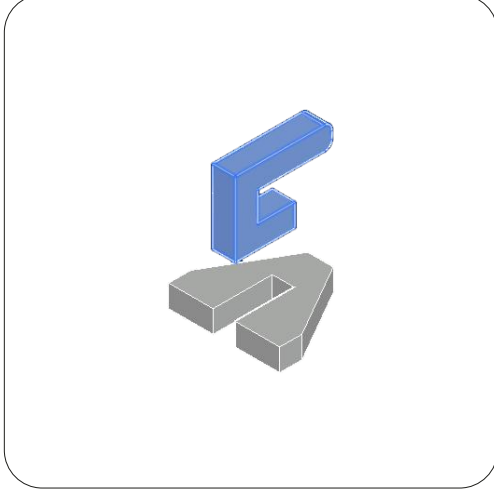
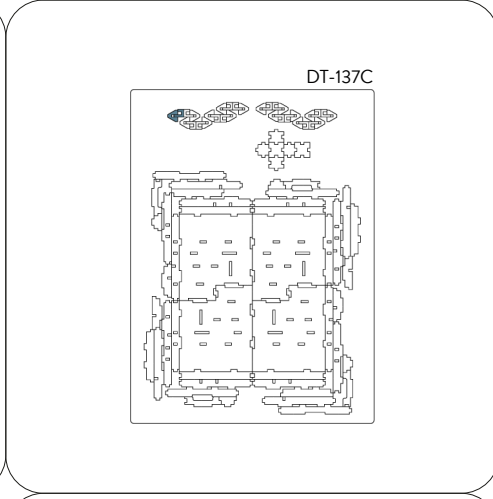
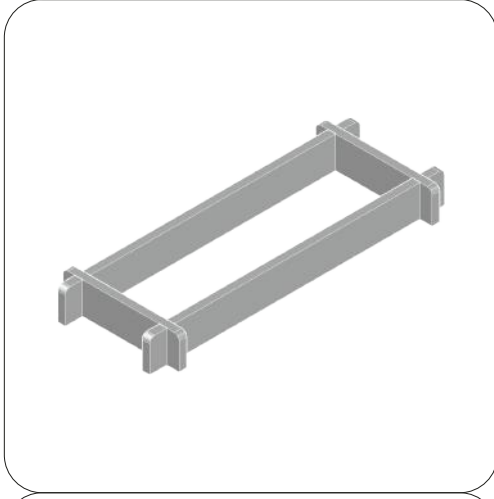
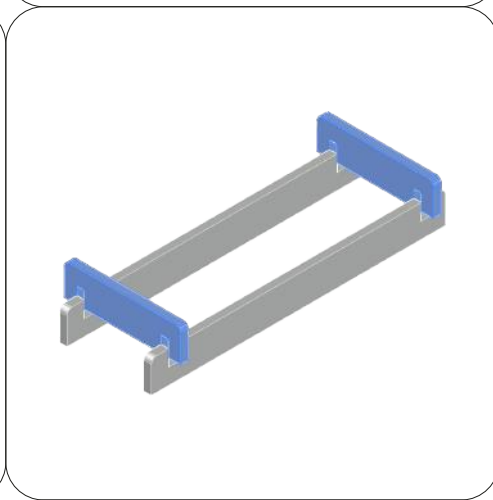
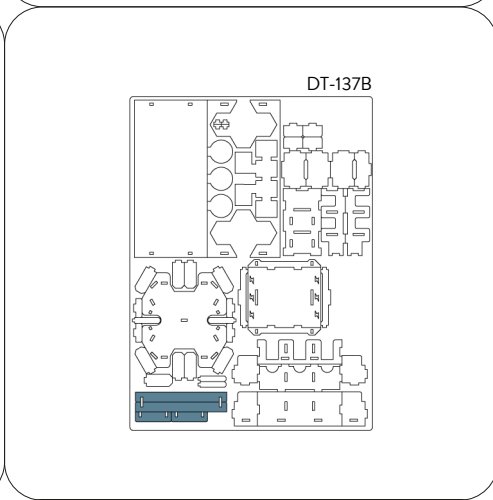
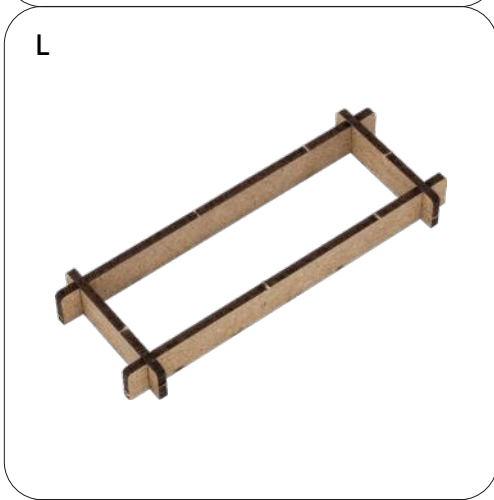
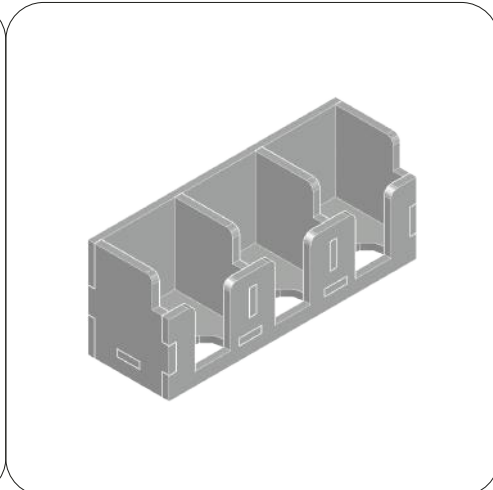
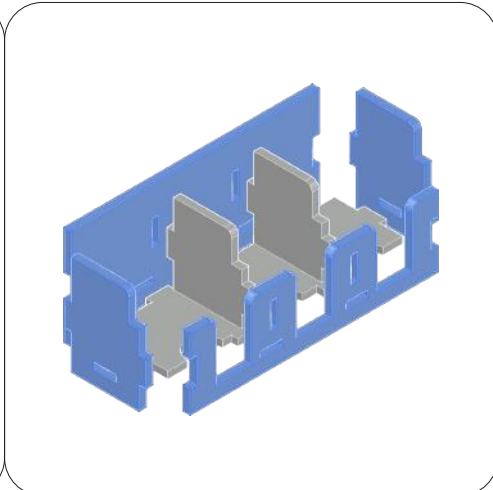
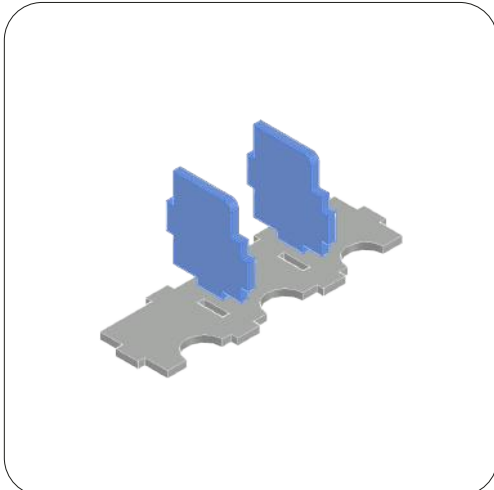


K



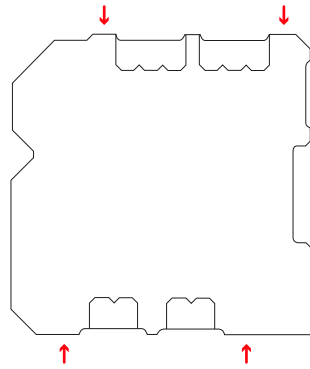
DT-137B







NOTE: 16 pins, 4 for each player board, to keep it lifted from the table and allow easy placement of cards even when sleeved. 16 pin, 4 per ogni plancia giocatore, per tenerla sollevata dal tavolo di gioco e permettere un facile posizionamento delle carte anche imbustate.

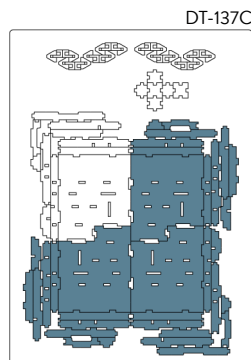
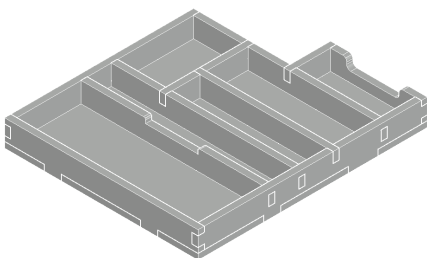
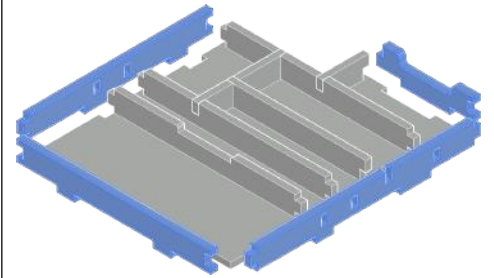
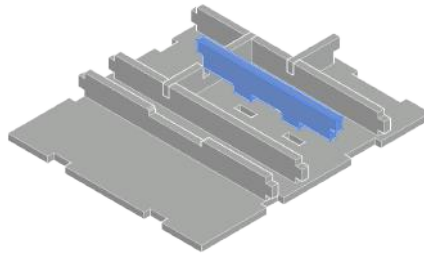
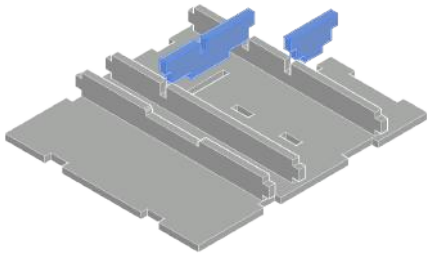
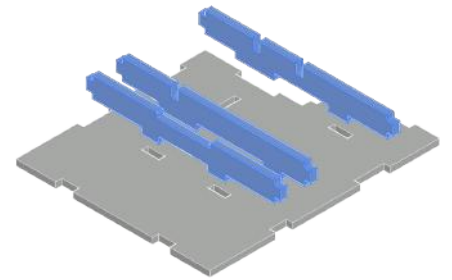
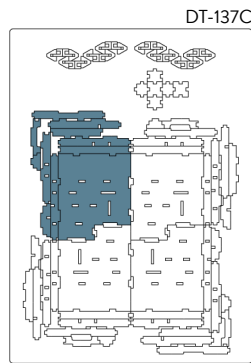


NOTE: Place them near the card insertion area. Posizionali in prossimità della zona di inserimento delle carte.



M

4x



REBOXING SEQUENCE!



Every piece will stay in its slot. Follow the reboxing sequence to properly store your organizer. We recommend using a h-band to avoid accidental box opening. Don't shake. Ogni componente rimarrà al suo posto. Segui la sequenza di reinserimento per riporre nella maniera corretta il tuo organizer. Consigliamo l'utilizzo di una h-band per evitare aperture accidentali. Non scuotere.



Non-recyclable waste.
Smaltire i materiali di scarto nell'indifferenziata.

All trademarks and copyrights are the property of their respective owners.
This product is not a toy. Contains small parts that can be swallowed or inhaled. 14+