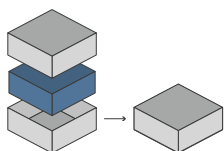




ORGANIZER - COMPATIBLE WITH FLAMECRAFT - ORGANIZER PLUS PLAYER BOARDS SET -



Designed to fit into the game box; flush closure is guaranteed. Progettato per inserirsi all'interno della scatola del gioco; garantisce chiusura a filo*



Designed for both sleeved and unsleeved cards. Adatto sia per carte imbustate che non imbustate*

28.3 x 28.3 x 6.6 cm



Size of assembled organiser
Dimensioni organizer assemblato

ORGANIZER CAPACITY

5x player boards, with dedicated slots for cards and tokens; 4x deck holders with dedicated slots. Fancy and artisan dragon holders can be placed directly on the player mat; 2x meeple holders for dragons and hearts; 2x resource trays; 1x game mat stand; 1x shop deck holder, with dedicated slots.

5x plance giocatore, con slot dedicati per carte e token; 4x portacarte con slot dedicati. I portacarte per draghi eleganti e artigiani possono essere posizionati direttamente sul mat di gioco; 2x vassoi per meeple drago e cuore; 2x portarisorse; 1x stand per mat di gioco; 1x contenitore per tessere negozio, con slot dedicati.



* Any doubt?
Check out our FAQ page or download the digital version of the instructions on our website!

All trademarks and copyrights are the property of their respective owners.
This product is not a toy. Contains small parts that can be swallowed or inhaled. 14+





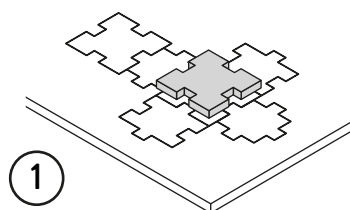
ORGANIZER - COMPATIBLE WITH FLAMECRAFT ORGANIZER PLUS PLAYER BOARDS SET



TUTORIAL - THE DICETROYERS DICE!

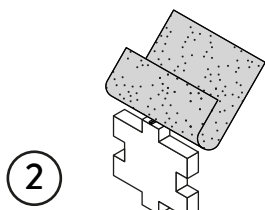
Among the pieces to assemble, you'll find a dice. This is not part of the organizer, but it can be a good starting point to practice!

Tra i materiali da assemblare troverai un dado. Questo componente non fa parte dell'organizer, né del gioco, ma è un ottimo punto di partenza per fare un po' di pratica.



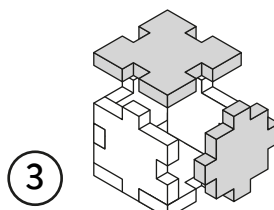
1

Gently take off
all the pieces.
Stacca delicatamente
dal foglio tutti i pezzi.



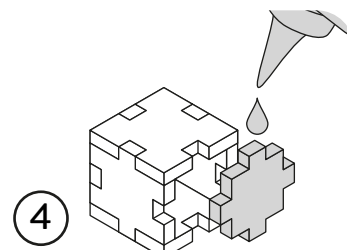
2

If necessary, use sand paper to
smoothen the borders.
Se necessario rifila con carta
vetrata per legno eventuali
imperfezioni dei pezzi.



3

Get familiar with
all the pieces
and check the correct assembly
sequence.
Prendi familiarità con tutti
i pezzi, per assicurarti
che la sequenza di assemblaggio sia
corretta.



4

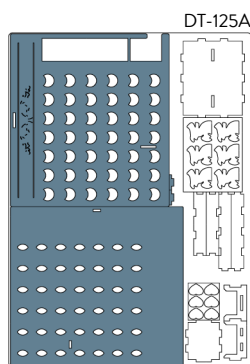
Once verified the correct assembly
sequence, just add a small quantity
of PVA glue on every joint.
Dopo aver verificato
la sequenza di assemblaggio
aggiungi una piccola quantità di
colla vinilica su tutti
gli incastri per garantirne
la durata nel tempo.

INSTRUCTIONS

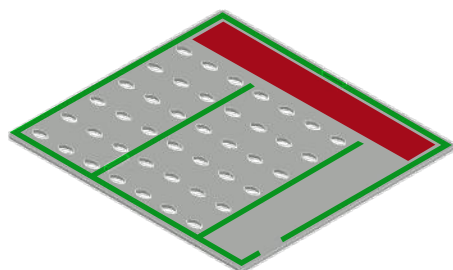
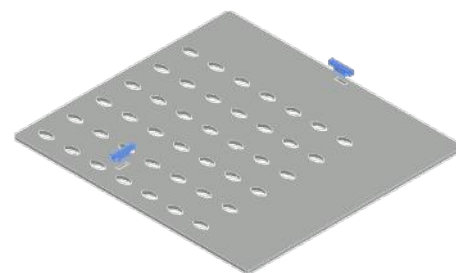
A



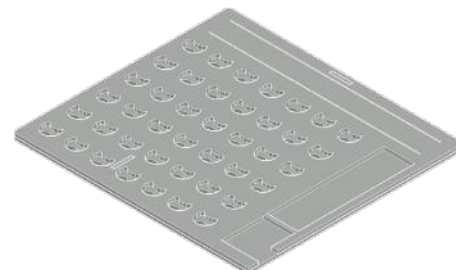
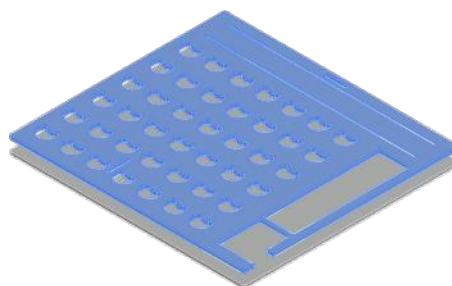
5x

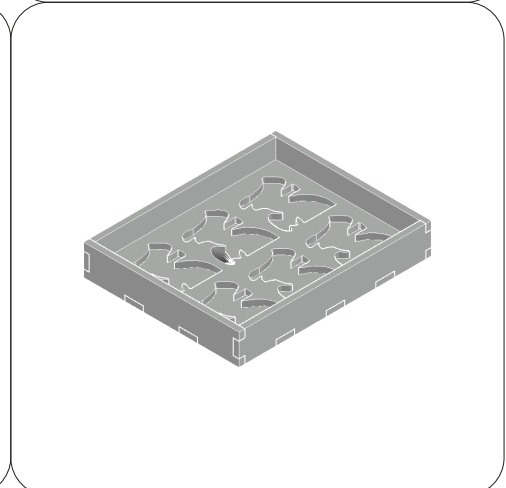
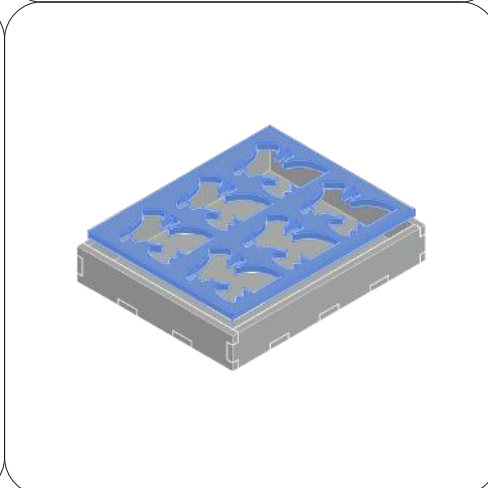
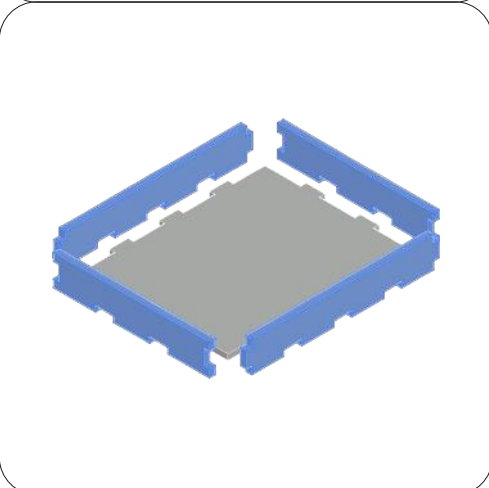
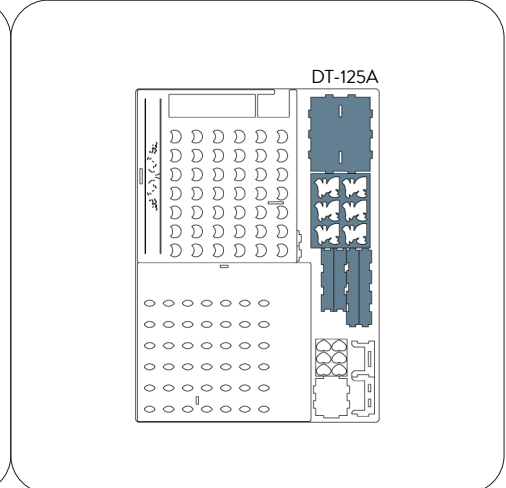
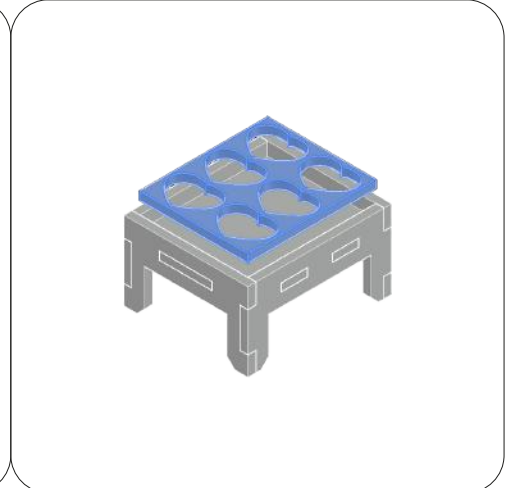
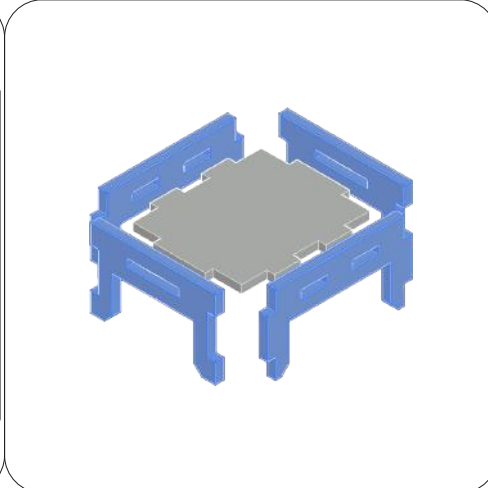
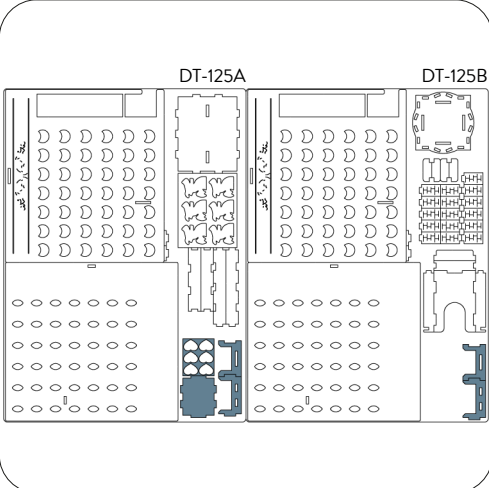
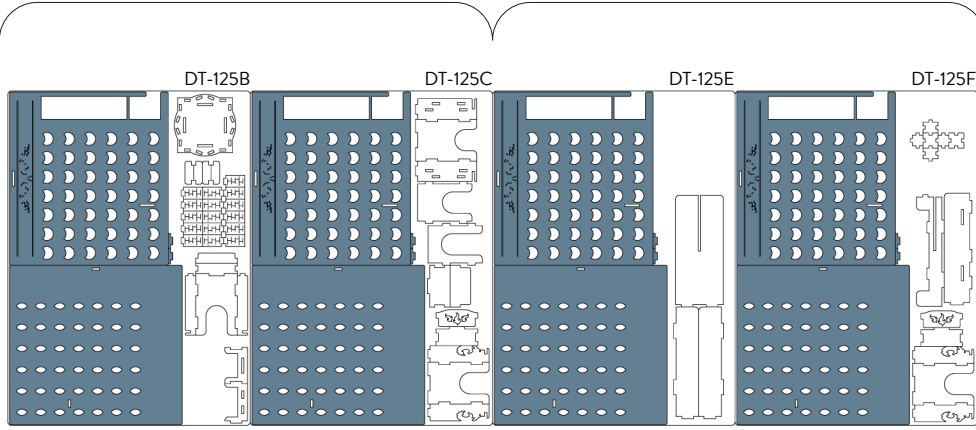


DT-125A

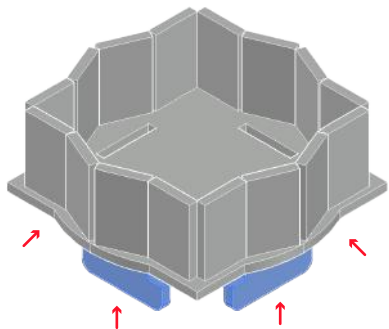
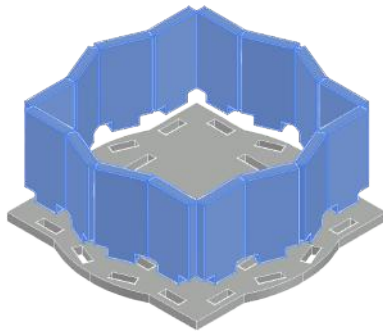
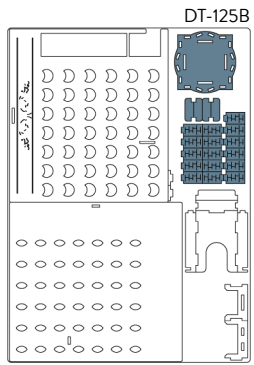


NOTE: Don't use glue on red areas. Stick the
area marked in green. Non usare colla sulle
aree rosse. Incollare l'area segnalata in verde.

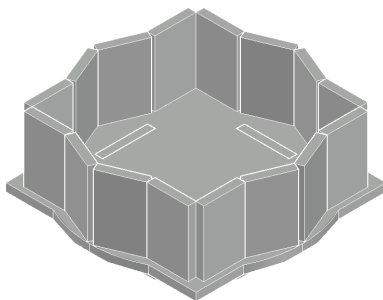




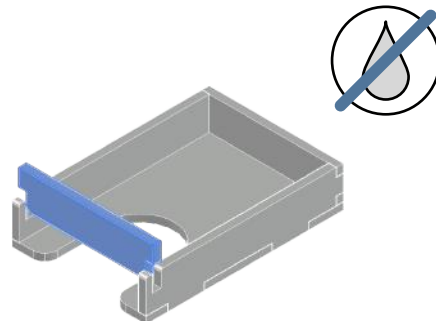
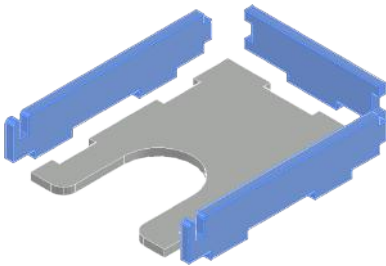
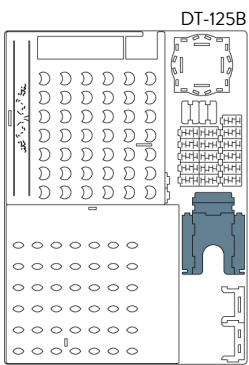
D



NOTE: The pins to be placed on the lower part are four. I piedini da posizionare nella parte inferiore sono quattro.

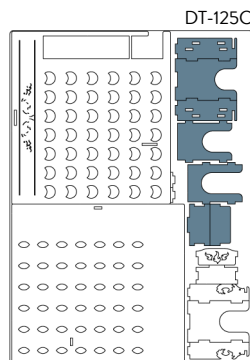


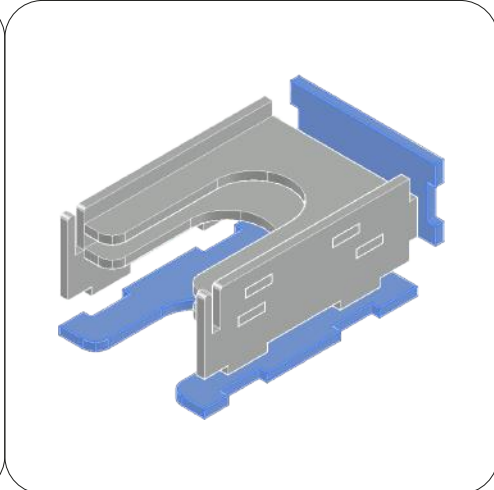
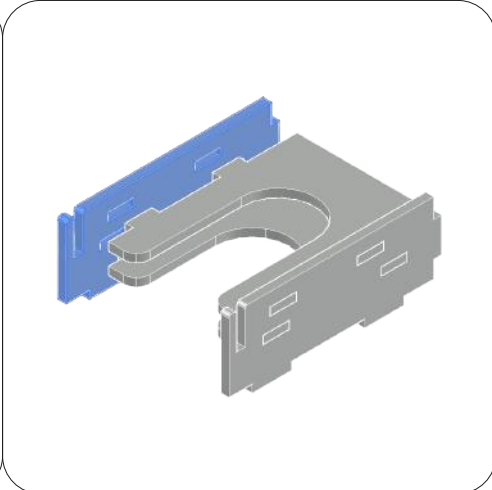
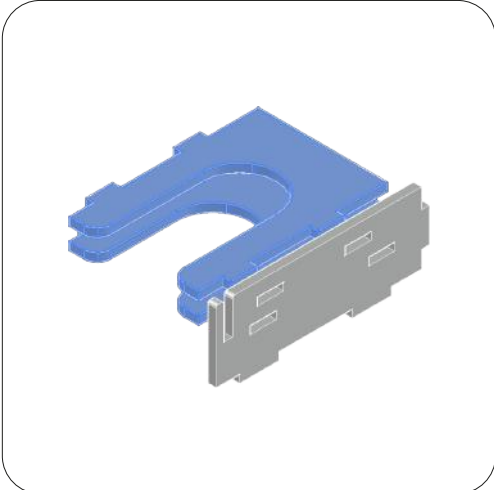
E



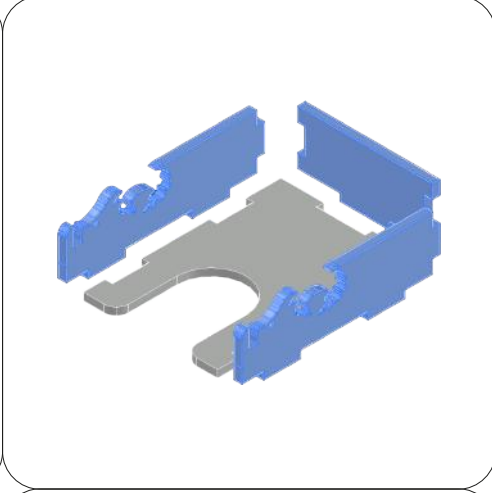
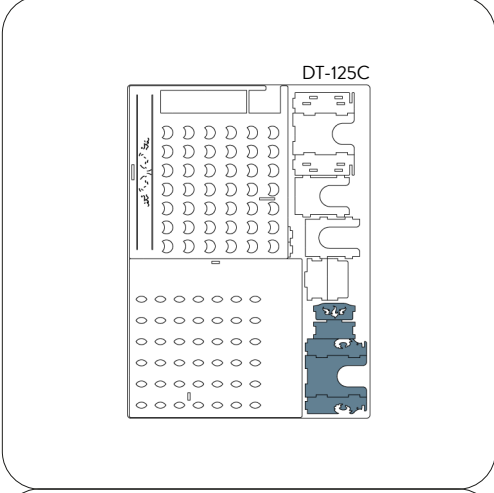
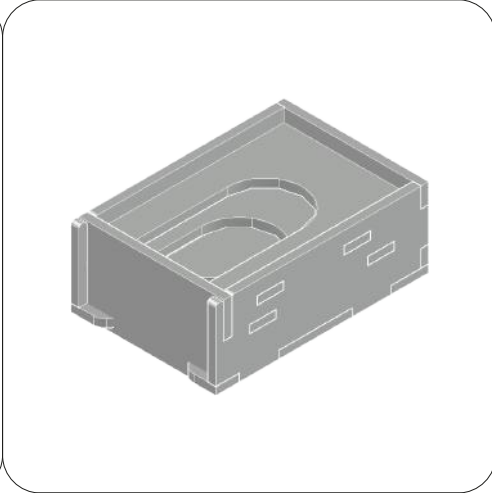
NOTE: Don't use glue on this joint; this piece can be removed during the game. Non usare colla su questo incastro, pezzo rimovibile durante il gioco.

F

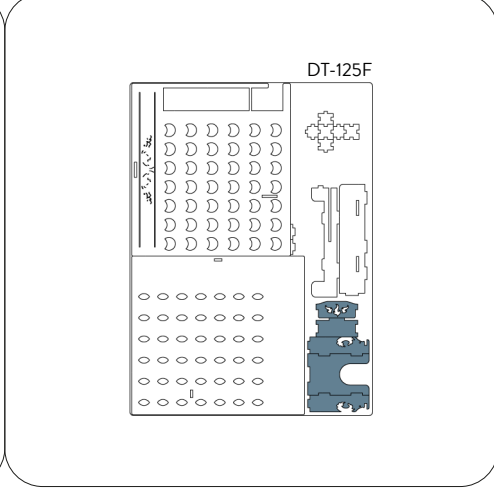
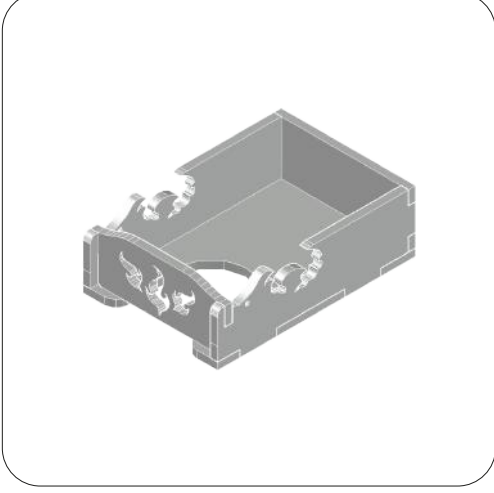


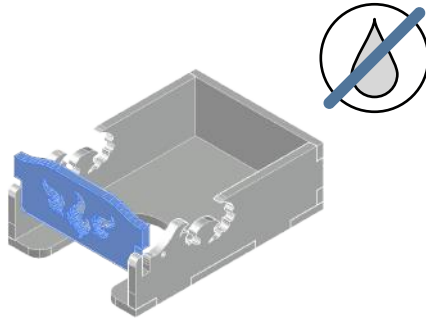
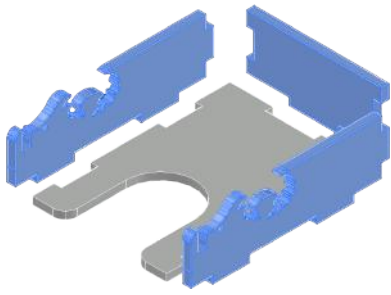


NOTE: Don't use glue on this joint; this piece can be removed during the game. Non usare colla su questo incastro, pezzo rimovibile durante il gioco.

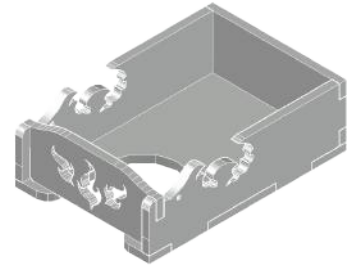


NOTE: Don't use glue on this joint; this piece can be removed during the game. Non usare colla su questo incastro, pezzo rimovibile durante il gioco.



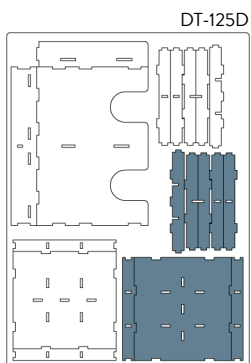
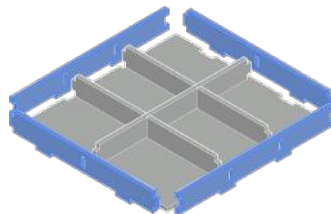
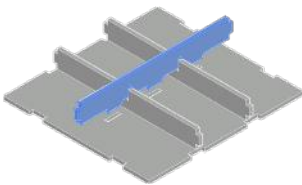
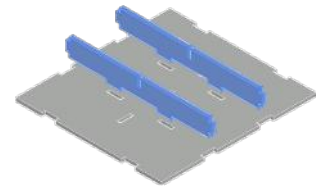
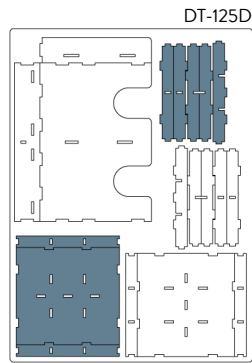


NOTE: Don't use glue on this joint; this piece can be removed during the game. Non usare colla su questo incastro, pezzo rimovibile durante il gioco.

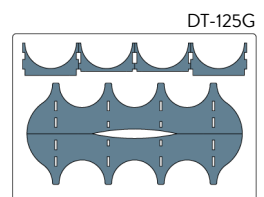


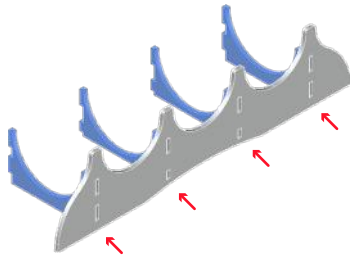
I

2x

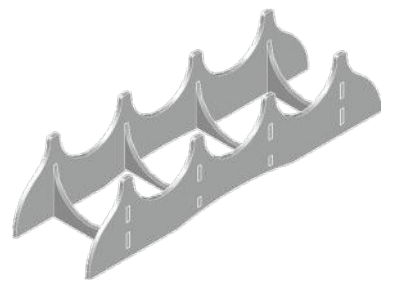
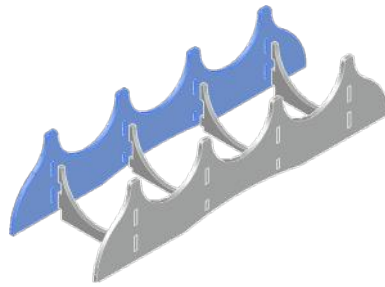


J

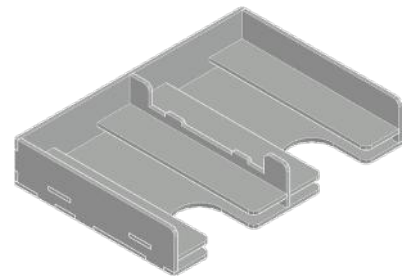
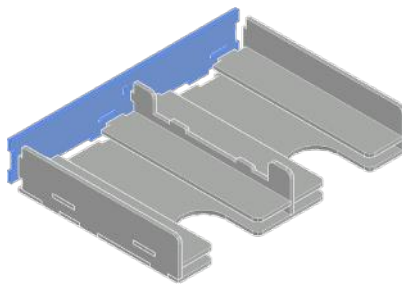
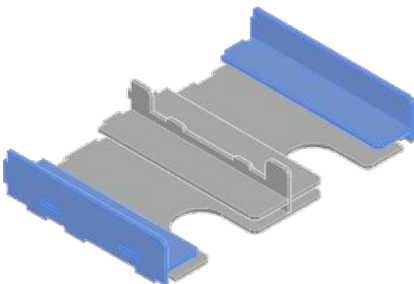
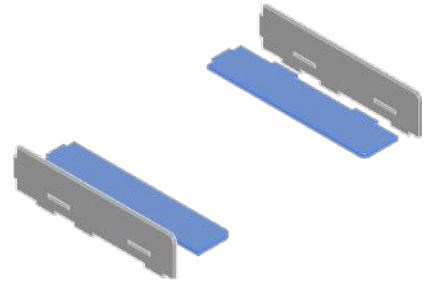
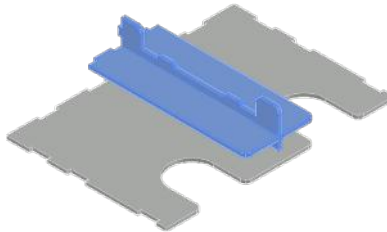
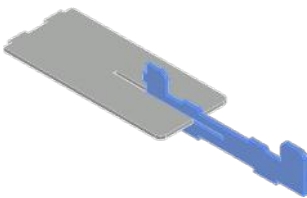
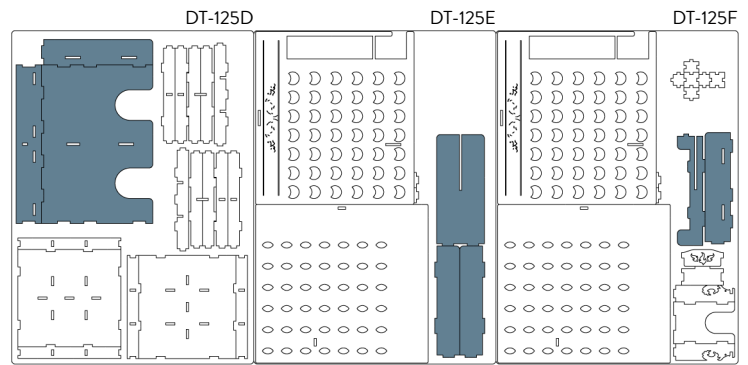




NOTE: Pay attention to the joints. The two central elements are different from the two side elements. Presta attenzione agli incastri. I due elementi centrali sono differenti dai due elementi laterali.



K



REBOXING SEQUENCE!



**VERTICAL
STORAGE
SAFETY**

Every piece will stay in its slot. Follow the reboxing sequence to properly store your organizer. We recommend using a h-band to avoid accidental box opening. Don't shake. Ogni componente rimarrà al suo posto. Segui la sequenza di reinserimento per riporre nella maniera corretta il tuo organizer. Consigliamo l'utilizzo di una h-band per evitare aperture accidentali. Non scuotere.



Non-recyclable waste.
Smaltire i materiali di scarto nell'indifferenziata.

All trademarks and copyrights are the property of their respective owners.
This product is not a toy. Contains small parts that can be swallowed or inhaled. 14+