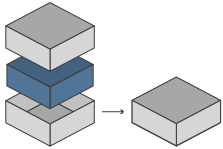




ORGANIZER - COMPATIBLE WITH GOLEM



GOLEM MARBLE THROWER
 You can also buy our marble thrower together with the organizer. Check it out on our website! Oltre all'organizer puoi anche acquistare la nostra Sinagoga in legno. Cercala sul nostro sito!



Designed to fit into the game box; flush closure is guaranteed. Progettato per inserirsi all'interno della scatola del gioco; garantisce chiusura a filo*



Designed for both sleeved and unsleeved cards. Adatto sia per carte imbustate che non imbustate*



85 Pieces to assemble
 Pezzi da assemblare



30.4 x 21.1 x 6.3 cm
 Size of assembled organiser
 Dimensioni organizer assemblato

ORGANIZER CAPACITY

4x player set boxes with dedicated slots; 1x deck holder with dedicated slots and Automa tile space; drawer for solo mode components; 1x token holder for Rabbi actions, paths, menorah, pass tokens; 1x resource tray for clay, knowledge, gold coins with slots for each value; 1x marble box; 1x gold ingots tray. 4x scatole set giocatore, con slot dedicati; 1x portacarte con slot dedicati e spazio per tile automa; cassetto per componenti modalità solo; 1x portatoken azioni Rabbino, percorsi, menorah, token passo; 1x portarisorse con spazi per argilla, conoscenza, monete d'oro. Slot per ogni taglio; 1x scatola biglie; 1x tray per lingotti d'oro.



* Any doubt? Check out our FAQ page or download the digital version of the instructions on our website!

All trademarks and copyrights are the property of their respective owners.
 This product is not a toy. Contains small parts that can be swallowed or inhaled. 14+



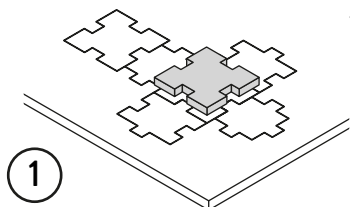


ORGANIZER - COMPATIBLE WITH GOLEM

TUTORIAL - THE DICETROYERS DICE!

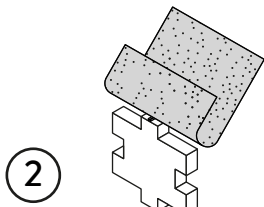
Among the pieces to assemble, you'll find a dice. This is not part of the organizer, but it can be a good starting point to practice!

Tra i materiali da assemblare troverai un dado. Questo componente non fa parte dell'organizer, né del gioco, ma è un ottimo punto di partenza per fare un po' di pratica.



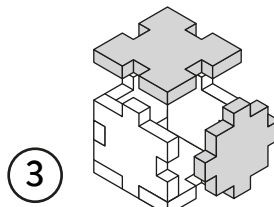
1

Gently take off
all the pieces.
Stacca delicatamente
dal foglio tutti i pezzi.



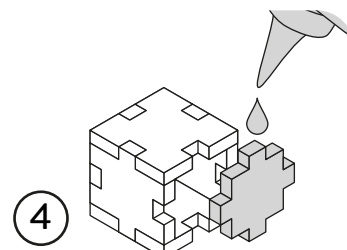
2

If necessary, use sand paper to
smoothen the borders.
Se necessario rifila con carta
vetrata per legno eventuali
imperfezioni dei pezzi.



3

Get familiar with
all the pieces
and check the correct assembly
sequence.
Prendi familiarità con tutti
i pezzi, per assicurarti
che la sequenza di assemblaggio sia
corretta.



4

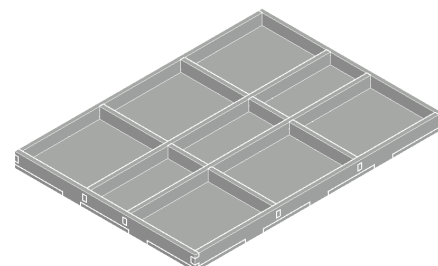
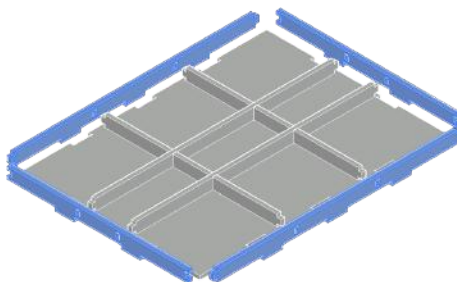
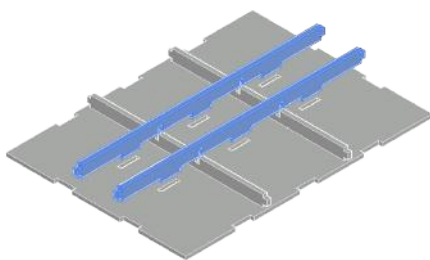
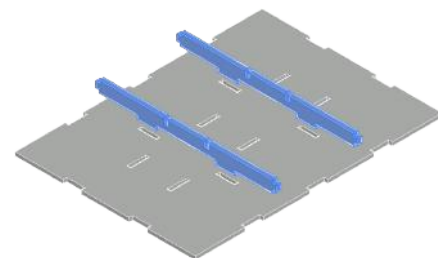
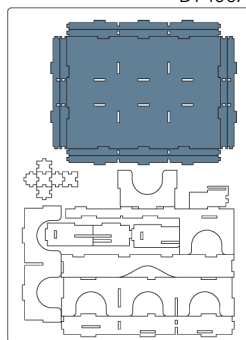
Once verified the correct assembly
sequence, just add a small quantity
of PVA glue on every joint.
Dopo aver verificato
la sequenza di assemblaggio
aggiungi una piccola quantità di
colla vinilica su tutti
gli incastri per garantirne
la durata nel tempo.

INSTRUCTIONS

A



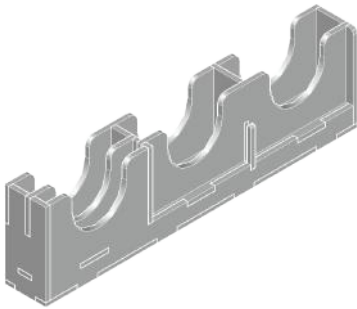
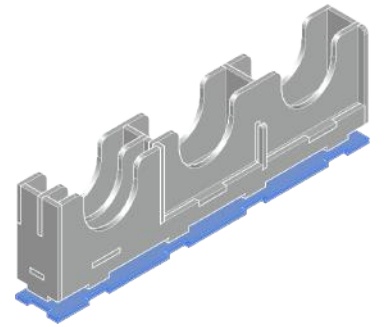
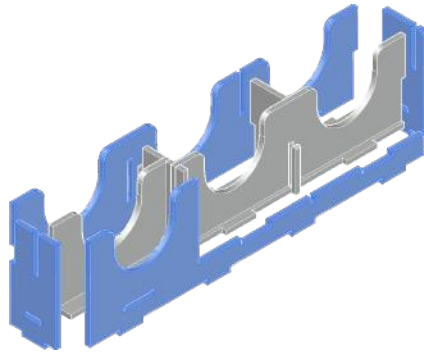
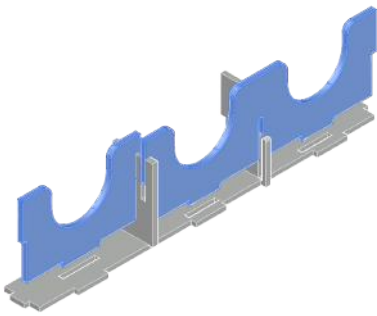
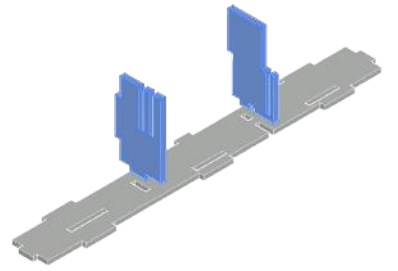
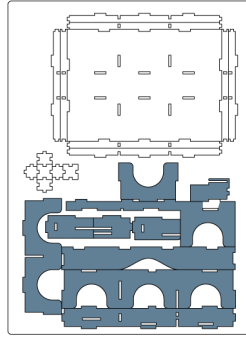
DT-100A



B



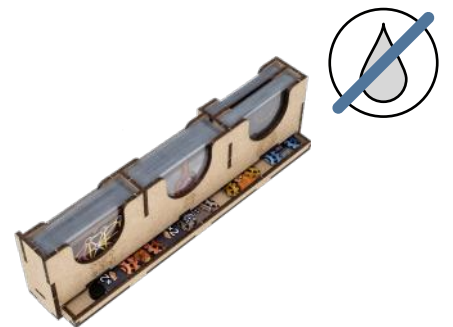
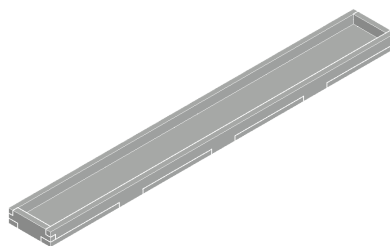
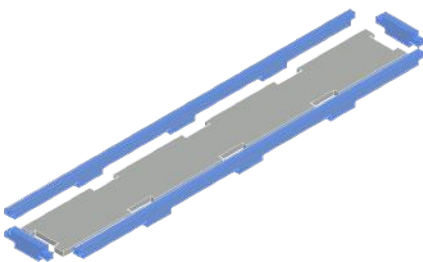
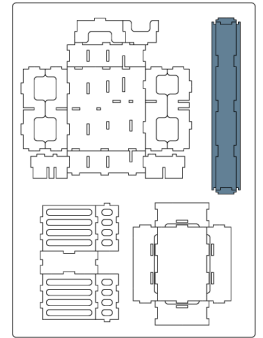
DT-100A



C

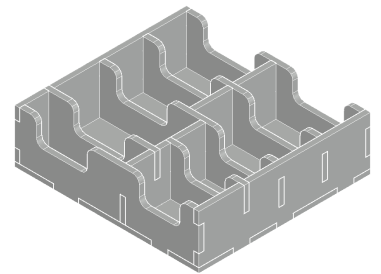
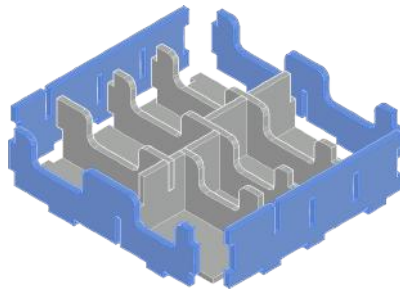
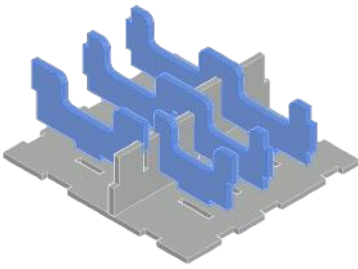
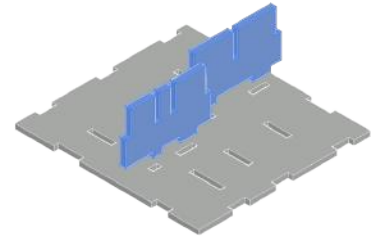
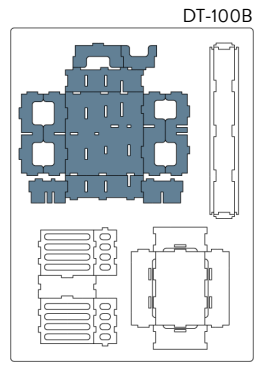


DT-100B

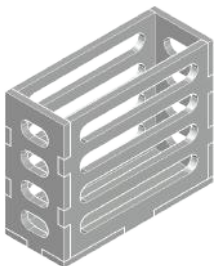
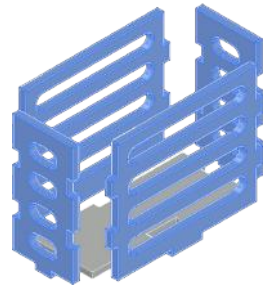
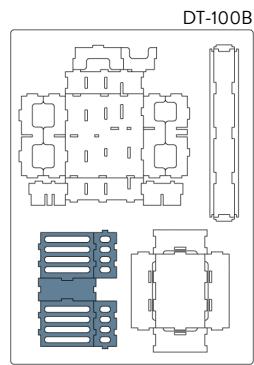


NOTE: Don't use glue on this joint; this piece can be removed during the game. Non usare colla su questo incastro, pezzo rimovibile durante il gioco.

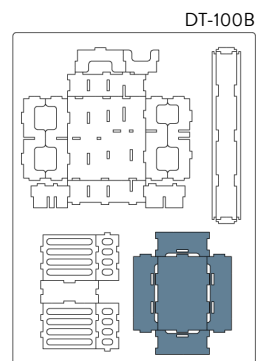
D

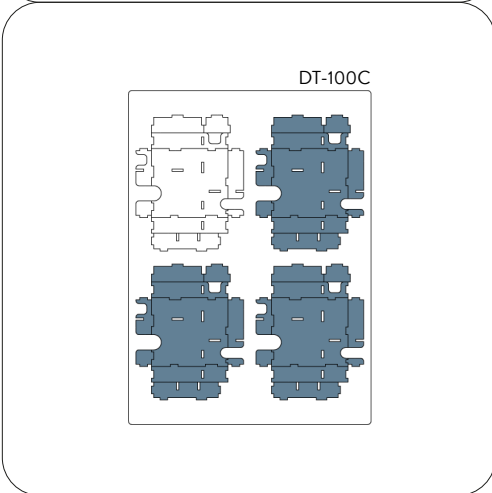
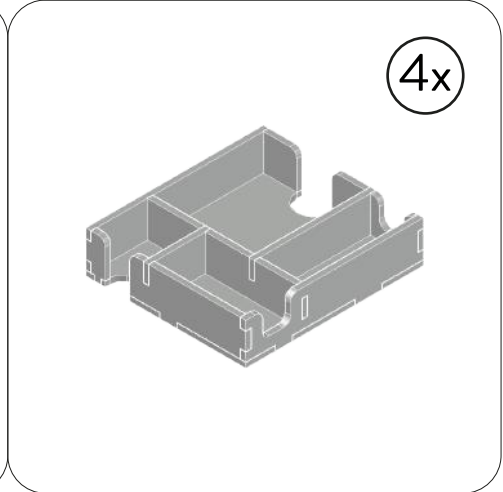
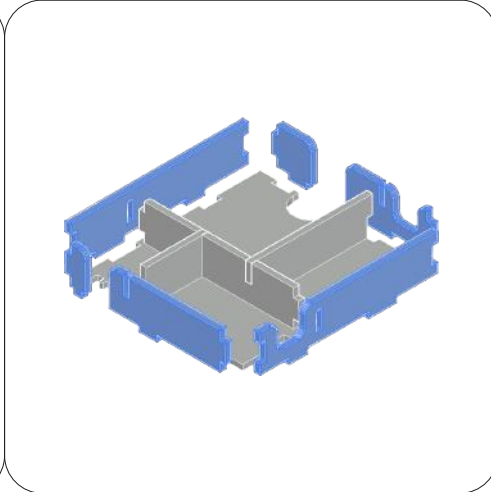
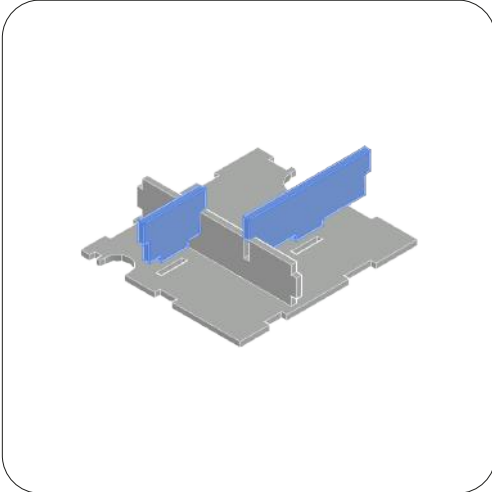
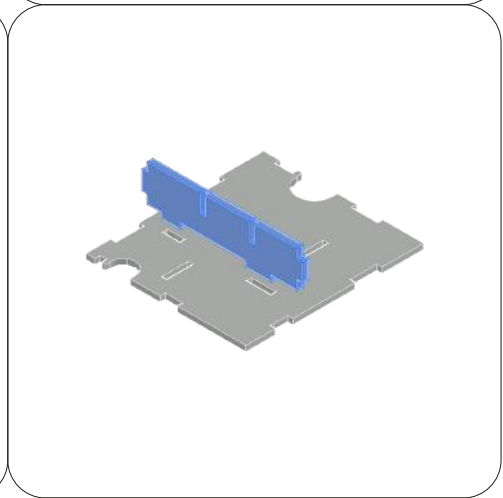
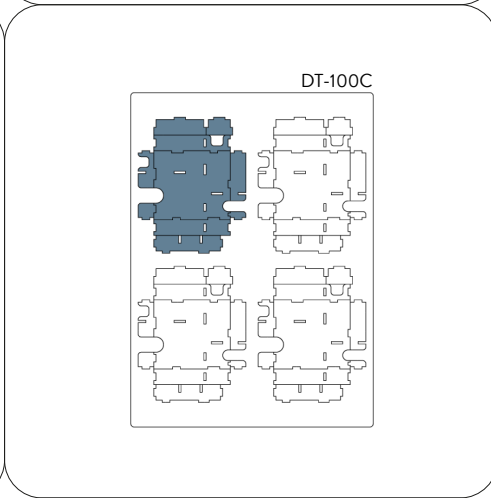
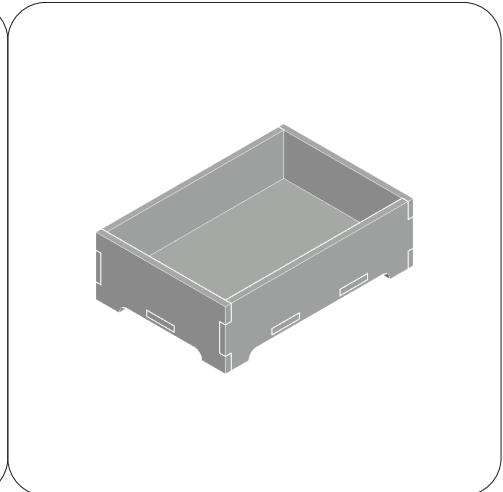
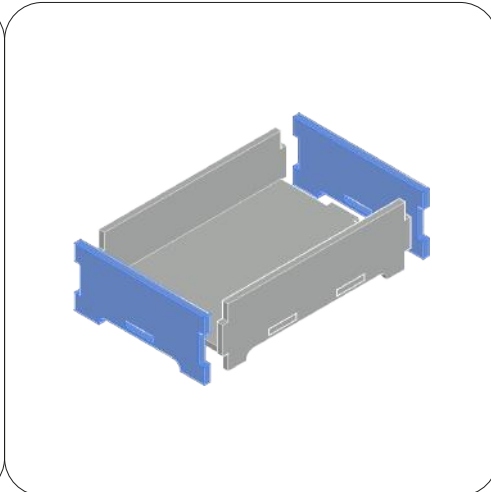
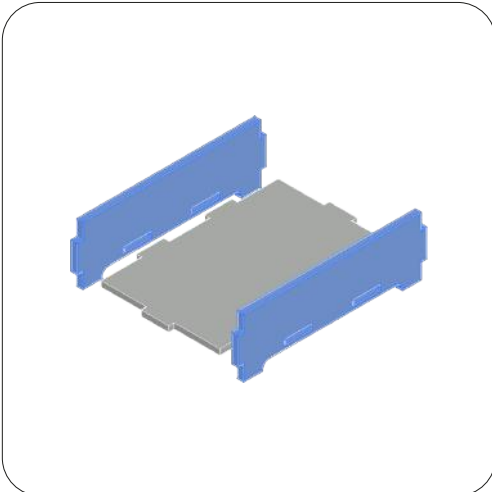


E



F



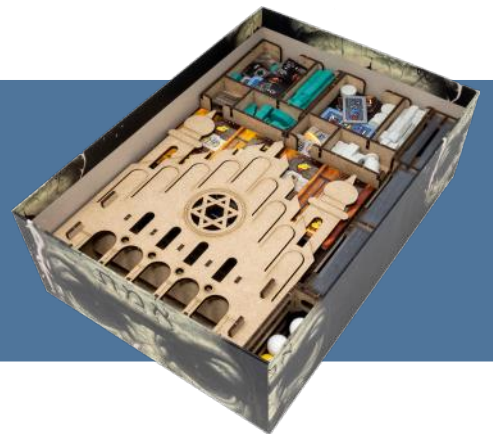


REBOXING SEQUENCE!



THE SYNAGOGUE - GOLEM COMPATIBLE MARBLE THROWER

If you purchased also our Synagogue, insert it in place of the original one. Se hai acquistato anche la nostra Sinagoga, inseriscila al posto di quella originale.



**VERTICAL
STORAGE
SAFETY**



Every piece will stay in its slot. Follow the reboxing sequence to properly store your organizer. We recommend using a h-band to avoid accidental box opening. Don't shake. Ogni componente rimarrà al suo posto.

Segui la sequenza di reinserimento per riporre nella maniera corretta il tuo organizer. Consigliamo l'utilizzo di una h-band per evitare aperture accidentali. Non scuotere.



Non-recyclable waste.
Smaltire i materiali di scarto nell'indifferenziata.

All trademarks and copyrights are the property of their respective owners.
This product is not a toy. Contains small parts that can be swallowed or inhaled. 14+