

PICK AND PLAY CARD HOLDER (TRIPLE ROW) - CHERRY BLOSSOM -



4 Pieces to assemble
Pezzi da assemblare

22.3 x 6 x 1.2 cm



Size once assembled
Dimensioni assemblato

TECHNICAL SPECS

1x jig for assembly; 1x triple track card holder. Length of each track: 21.3 cm.

Compatible with all card sizes, sleeved or unsleeved.

1x dima di montaggio; 1x portacarte con binario triplo. Lunghezza di ogni binario 21,3 cm.

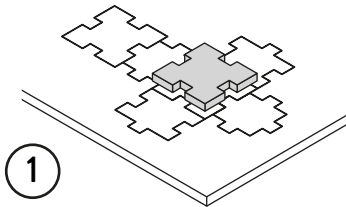
Compatibile con tutti i formati di carte, imbustate e non.



Any doubt?
Check out our FAQ page
or download the digital
version of the instructions
on our website!

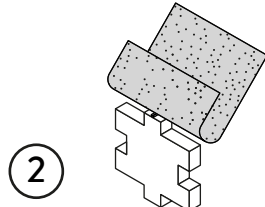
All trademarks and copyrights are the property of their respective owners.
This product is not a toy. Contains small parts that can be swallowed or inhaled. 14+

PICK AND PLAY CARD HOLDER (TRIPLE ROW) - CHERRY BLOSSOM



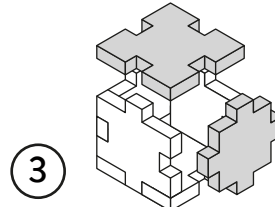
1

Gently take off
all the pieces.
Stacca delicatamente
dal foglio tutti i pezzi.



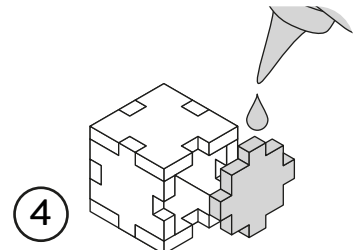
2

If necessary, use sand paper to
smoothen the borders.
Se necessario rifila con carta
vetrata per legno eventuali
imperfezioni dei pezzi.



3

Get familiar with
all the pieces
and check the correct assembly
sequence.
Prendi familiarità con tutti
i pezzi, per assicurarti
che la sequenza di assemblaggio sia
corretta.



4

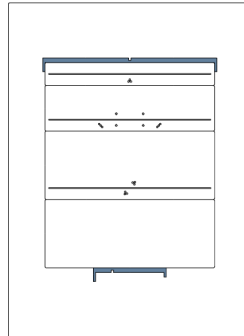
Once verified the correct assembly
sequence, just add a small quantity
of PVA glue on every joint.
Dopo aver verificato
la sequenza di assemblaggio
aggiungi una piccola quantità di
colla vinilica su tutti
gli incastri per garantirne
la durata nel tempo.

INSTRUCTIONS

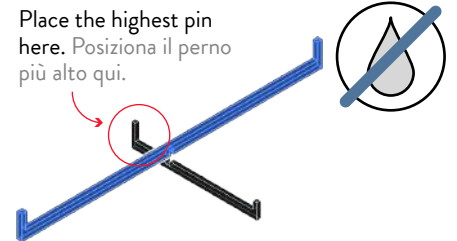
A



DT-89A

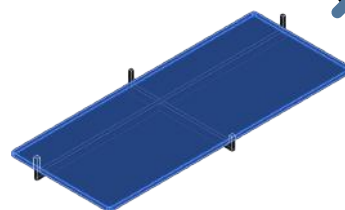
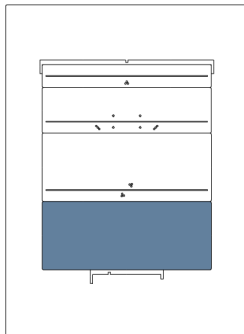


Place the highest pin
here. Posiziona il perno
più alto qui.



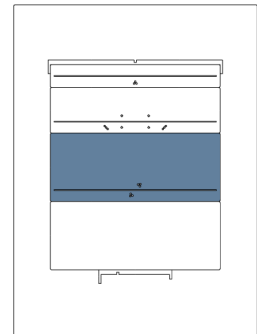
NOTE: Assemble the guides first. Don't use
glue on this step and, during the other steps,
be careful not to glue the card holder to the
guides. Per prima cosa assembla le guide. Non
usare colla su questo passaggio e durante le
altre fasi presta attenzione a non incollare il
portacarte alle guide.

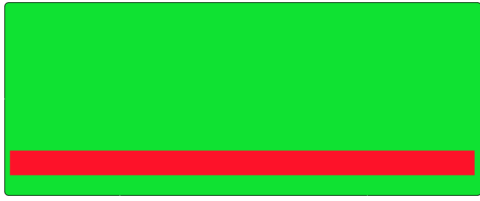
DT-89A



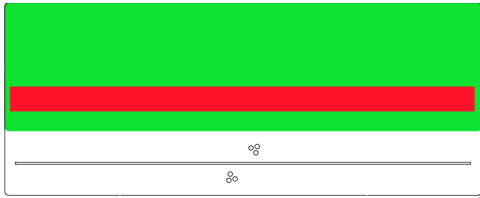
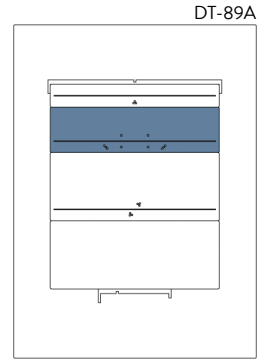
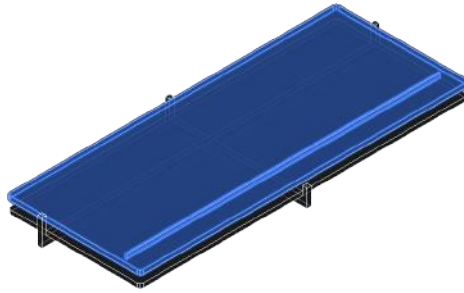
NOTE: Don't use glue on this step.
Place the engraved sides facing upwards.
Non usare colla su questo passaggio.
Presta attenzione ai lati incisi, vanno rivolti
verso l'alto.

DT-89A

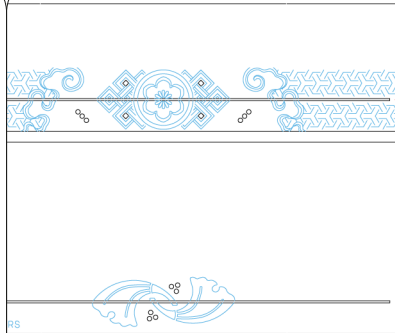




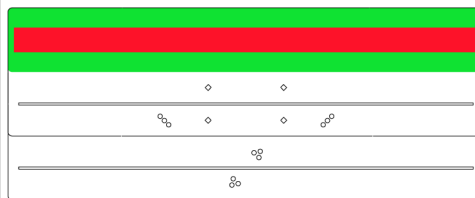
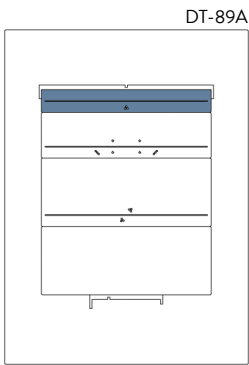
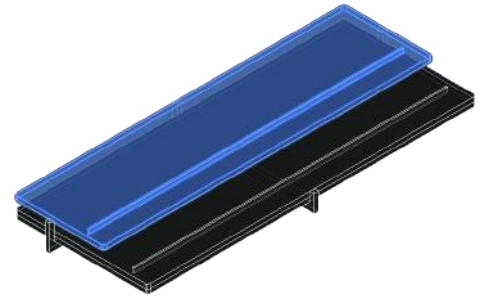
NOTE: Don't use glue on red areas. Stick the area marked in green. Non usare colla sulle aree rosse. Incollare l'area segnalata in verde.



NOTE: Don't use glue on red areas. Stick the area marked in green. Non usare colla sulle aree rosse. Incollare l'area segnalata in verde.



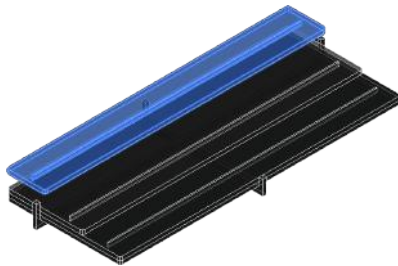
NOTE: Be careful to place the top layer by orienting it as shown in the figure above. Place the engraved sides facing upwards. Presta attenzione a posizionare lo strato superiore orientandolo come mostrato nella figura qui sopra. I lati incisi vanno rivolti verso l'alto.



NOTE: Don't use glue on red areas. Stick the area marked in green. Non usare colla sulle aree rosse. Incollare l'area segnalata in verde.



NOTE: Be careful to place the top layer by orienting it as shown in the figure above. Place the engraved sides facing upwards. Presta attenzione a posizionare lo strato superiore orientandolo come mostrato nella figura qui sopra. I lati incisi vanno rivolti verso l'alto.

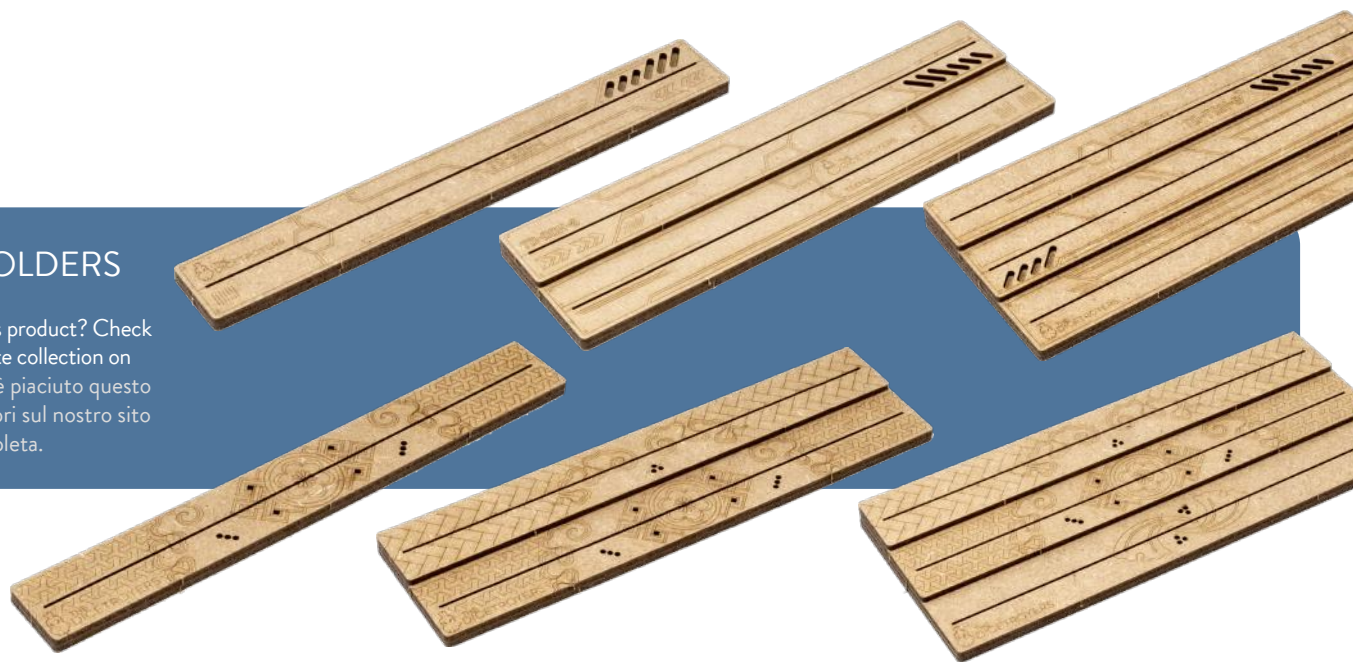


NOTE: Let the glue dry, then remove the guides. Lascia asciugare la colla. Dopodiché rimuovi le guide.



CARD HOLDERS

Did you like this product? Check out the complete collection on our website! Ti è piaciuto questo prodotto? Scopri sul nostro sito la gamma completa.



Non-recyclable waste.
Smaltire i materiali di scarto nell'indifferenziata.

All trademarks and copyrights are the property of their respective owners.
This product is not a toy. Contains small parts that can be swallowed or inhaled. 14+