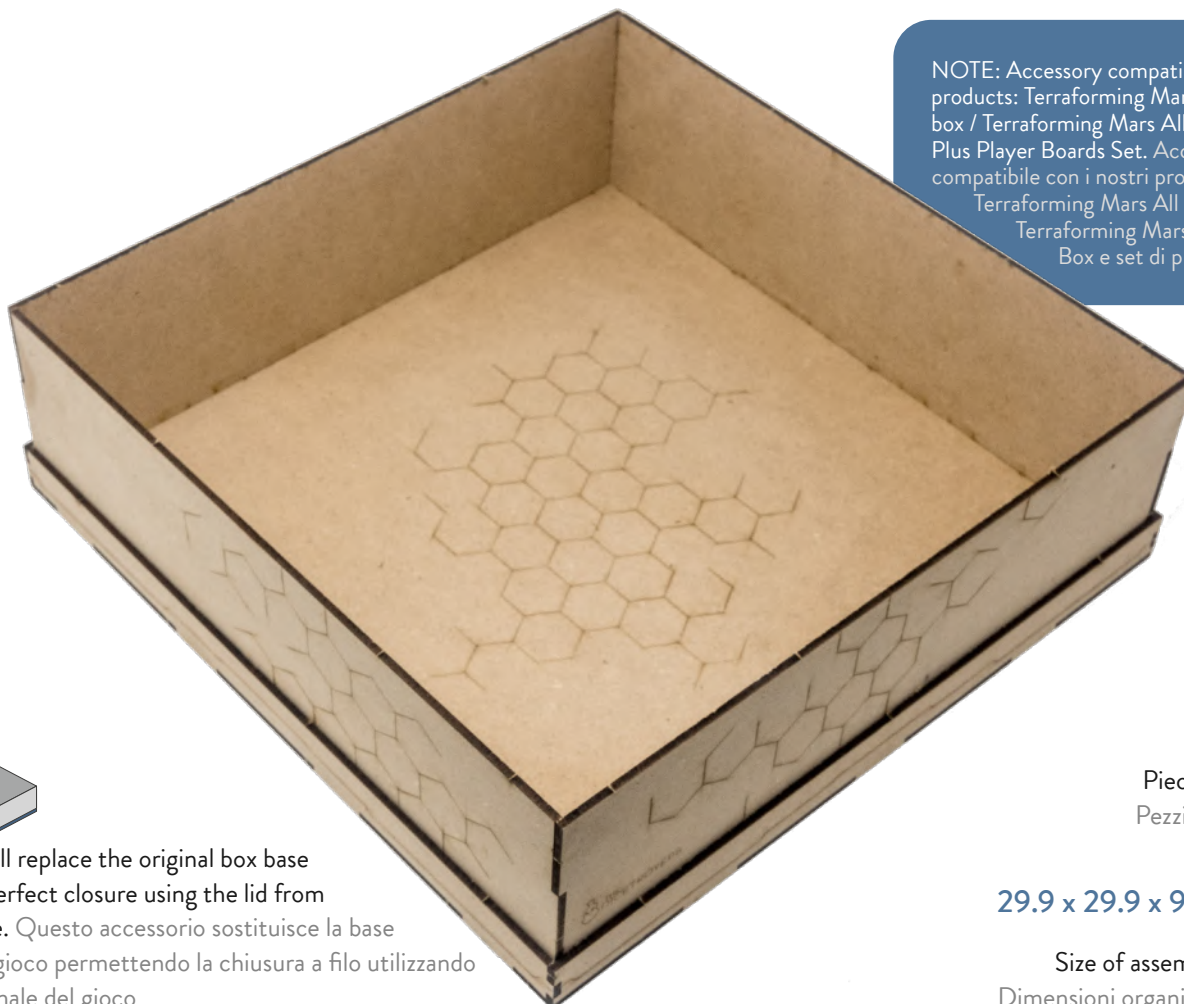
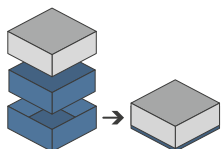


ORGANIZER - COMPATIBLE WITH TERRAFORMING MARS LIFTED BASE



NOTE: Accessory compatible with our products: Terraforming Mars All in one box / Terraforming Mars All in one box Plus Player Boards Set. Accessorio compatibile con i nostri prodotti: Terraforming Mars All in one Box e Terraforming Mars All in one Box e set di plancette.



This accessory will replace the original box base and will allow a perfect closure using the lid from the original game. Questo accessorio sostituisce la base della scatola del gioco permettendo la chiusura a filo utilizzando il coperchio originale del gioco



9 Pieces to assemble
Pezzi da assemblare

29.9 x 29.9 x 9 cm



Size of assembled organiser
Dimensioni organizer assemblato

ORGANIZER CAPACITY

1x lifted base to house the whole organizer and game components and closing everything flush with the original game's lid; the double layered base guarantees strength, stability and a perfect closure of the box. 1x base con alzata per alloggiare l'intero organizer e chiudere con il coperchio originale del gioco chiudendo tutto a filo; il doppio strato della base garantisce robustezza, stabilità e una chiusura perfetta della scatola.

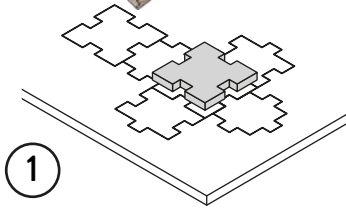
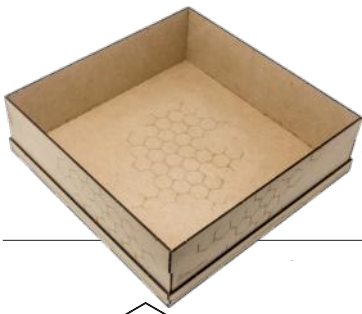


Any doubt?
Check out our FAQ page
or download the digital
version of the instructions
on our website!

All trademarks and copyrights are the property of their respective owners.
This product is not a toy. Contains small parts that can be swallowed or inhaled. 14+

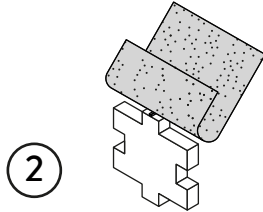


ORGANIZER - COMPATIBLE WITH TERRAFORMING MARS - LIFTED BASE



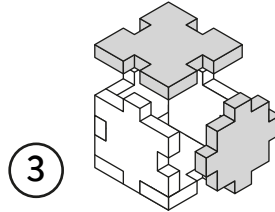
1

Gently take off
all the pieces.
Stacca delicatamente
dal foglio tutti i pezzi.



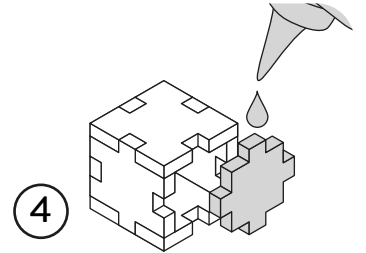
2

If necessary, use sand paper to
smoothen the borders.
Se necessario rifila con carta
vetrata per legno eventuali
imperfezioni dei pezzi.



3

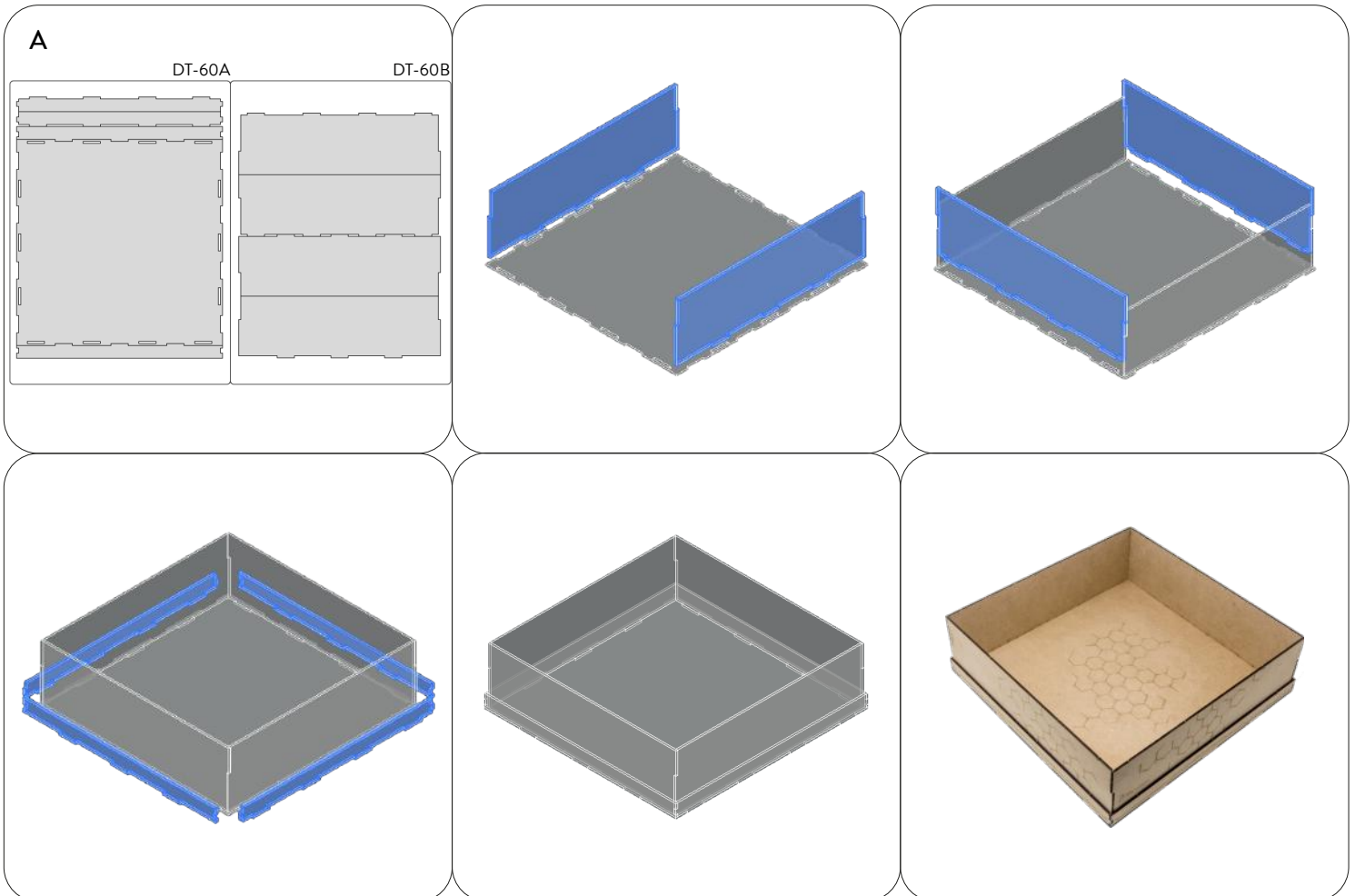
Get familiar with
all the pieces and check the
correct assembly sequence.
Prendi familiarità con tutti
i pezzi, per assicurarti che la
sequenza di assemblaggio sia
corretta.



4

Once verified the correct assembly
sequence, just add a small quantity
of PVA glue on every joint.
Dopo aver verificato la sequenza di
assemblaggio aggiungi una piccola
quantità di colla vinilica su tutti
gli incastri per garantirne
la durata nel tempo.

INSTRUCTIONS



Non-recyclable waste
Smaltire i materiali di scarto nell'indifferenziata

All trademarks and copyrights are the property of their respective owners.
This product is not a toy. Contains small parts that can be swallowed or inhaled. 14+