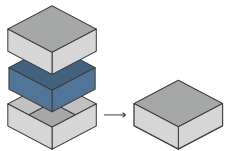




ORGANIZER - COMPATIBLE WITH
ARCHITECTS OF THE WEST KINGDOM
 COMPATIBLE WITH BASE GAME (RETAIL EDITION) OR BASE GAME + KICKSTARTER PROMOS



Designed to fit into the game box; flush closure is guaranteed. Progettato per inserirsi all'interno della scatola del gioco; garantisce chiusura a filo*



Designed for both sleeved and unsleeved cards. Adatto sia per carte imbustate che non imbustate*



30 Pieces to assemble
 Pezzi da assemblare



21.6 x 21.6 x 3.85 cm
 Size of assembled organiser
 Dimensioni organizer assemblato

ORGANIZER CAPACITY

1x card holder with spaces for buildings, specialists, automa deck, black market/cathedral rewards/additional resources; 1x resource box with partitions for wood, stone, gold, marble, clay, coins (cardboard or metallic); 1x box with spaces for player meeples, with 5 separated housings; space for cardboard tax warehouse (kickstarter exclusive). 1x portacarte, con alloggiamenti separati per carte edificio, specialisti, mazzo automa, debiti, risorse aggiuntive/mercato nero/ricompense cattedrale; 1x portarisorse con alloggiamenti separati per legno, pietra, oro, marmo, argilla, monete (cartone o metalliche); 1x contenitore per set meeples giocatori, con 5 alloggiamenti separati; spazio aggiuntivo per deposito tasse in cartoncino (esclusiva kickstarter).



* Any doubt? Check out our FAQ page or download the digital version of the instructions on our website!

All trademarks and copyrights are the property of their respective owners.
 This product is not a toy. Contains small parts that can be swallowed or inhaled. 14+





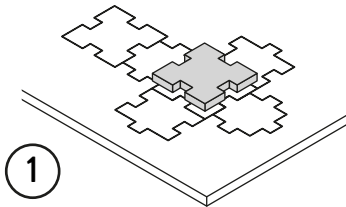
ORGANIZER - COMPATIBLE WITH ARCHITECTS OF THE WEST KINGDOM



TUTORIAL - THE DICETROYERS DICE!

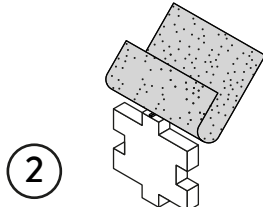
Among the pieces to assemble, you'll find a dice. This is not part of the organizer, but it can be a good starting point to practice!

Tra i materiali da assemblare troverai un dado. Questo componente non fa parte dell'organizer, né del gioco, ma è un ottimo punto di partenza per fare un po' di pratica.



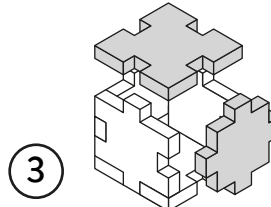
1

Gently take off
all the pieces.
Stacca delicatamente
dal foglio tutti i pezzi.



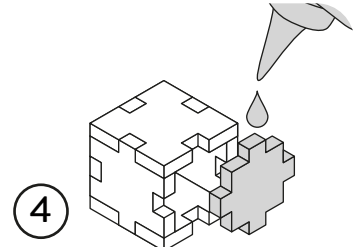
2

If necessary, use sand paper to
smoothen the borders.
Se necessario rifila con carta
vetrata per legno eventuali
imperfezioni dei pezzi.



3

Get familiar with
all the pieces
and check the correct assembly
sequence.
Prendi familiarità con tutti
i pezzi, per assicurarti
che la sequenza di assemblaggio sia
corretta.

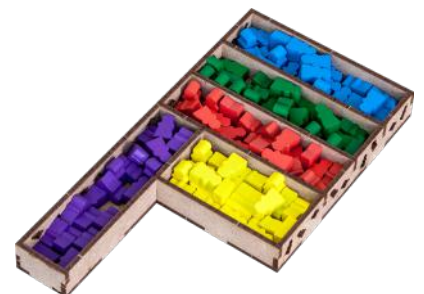
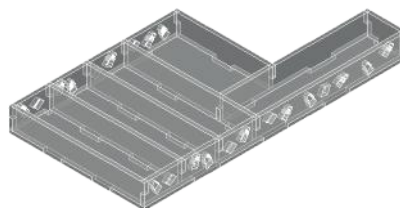
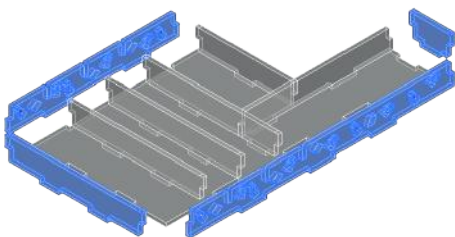
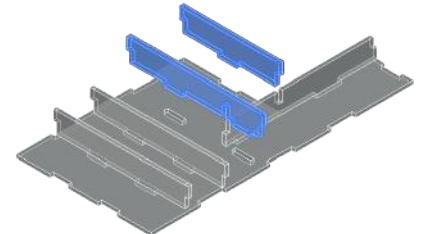
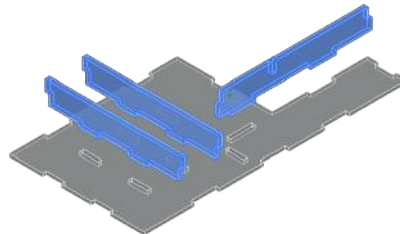
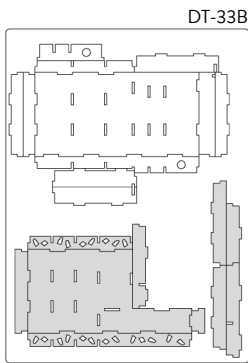


4

Once verified the correct assembly
sequence, just add a small quantity
of PVA glue on every joint.
Dopo aver verificato
la sequenza di assemblaggio
aggiungi una piccola quantità di
colla vinilica su tutti
gli incastri per garantirne
la durata nel tempo.

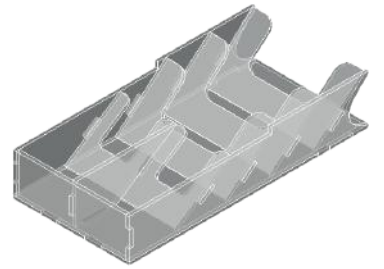
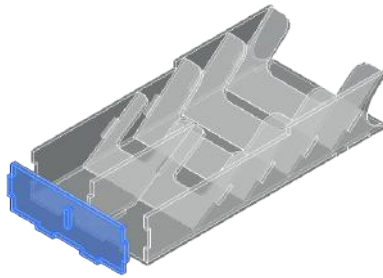
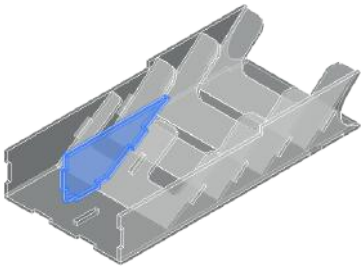
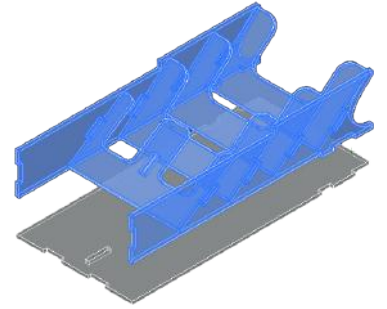
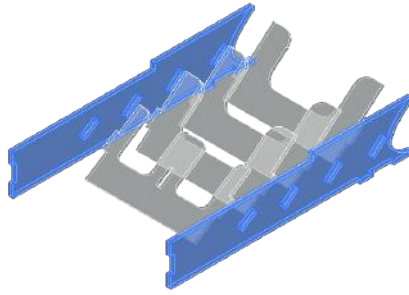
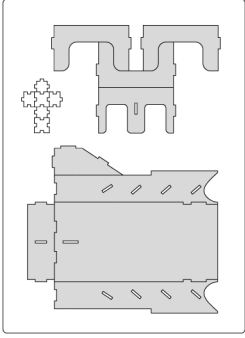
INSTRUCTIONS

A



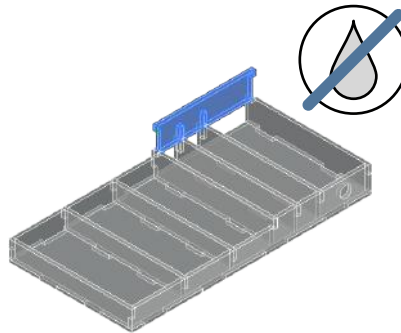
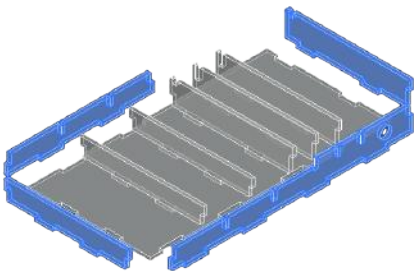
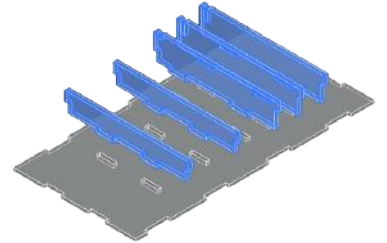
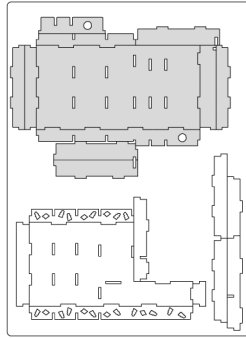
B

DT-33A

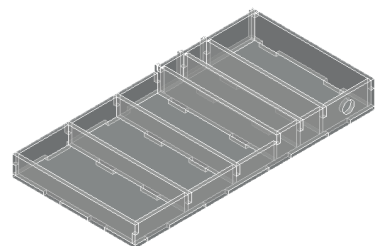


C

DT-33B



NOTE: Don't use glue on this joint; this piece can be removed during the game. Non usare colla su questo incastro, pezzo rimovibile durante il gioco.



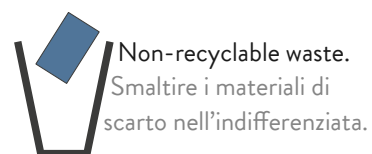


REBOXING SEQUENCE!



Every piece will stay in its slot. Follow the reboxing sequence to properly store your organizer. We recommend using a h-band to avoid accidental box opening. Don't shake. Ogni componente rimarrà al suo posto.

Segui la sequenza di reinserimento per riporre nella maniera corretta il tuo organizer. Consigliamo l'utilizzo di una h-band per evitare aperture accidentali. Non scuotere.



All trademarks and copyrights are the property of their respective owners.
This product is not a toy. Contains small parts that can be swallowed or inhaled. 14+