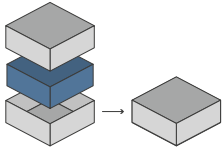




ORGANIZER - COMPATIBLE WITH THE VOYAGES OF MARCO POLO



Designed to fit into the game box; flush closure is guaranteed. Progettato per inserirsi all'interno della scatola del gioco; garantisce chiusura a filo*



Designed for both sleeved and unsleeved cards. Adatto sia per carte imbustate che non imbustate*



44 Pieces to assemble
Pezzi da assemblare



30.7 x 21.7 x 4.6 cm
Size of assembled organiser
Dimensioni organizer assemblato

ORGANIZER CAPACITY

1x contract tokens box, with 5 slots for each individual round of the game +1 housing for the remaining tokens; 1x token, cards and various box, with 6 hostings: card holder suitable for sleeved cards 60 microns (eg Sapphire) and not; 1x player box, with 4 slots for each individual color, with 4 single shutter openings for easy access to the parts; 1x resource and coin holder, with 9 slots to keep each resource and 1x and 3x meeple separate, shutter opening for easy access to the pieces. 1x portatoken contratti, con 5 alloggiamenti per i singoli round di gioco +1 alloggiamento per i token restanti; 1x portatoken, carte e vari, con 6 alloggiamenti: portacarte adatto per carte imbustate 60 micron (eg Sapphire) e non; 1x scatola portagiocatori, con 4 alloggiamenti per i singoli colori, con 4 aperture a saracinesca singole per accesso facilitato ai pezzi; 1x portarisorse e monete, con 9 alloggiamenti per tenere separate risorse e quantità 1x e 3x, aperture a saracinesca per accesso facilitato ai pezzi.



* Any doubt?
Check out our FAQ page or download the digital version of the instructions on our website!

All trademarks and copyrights are the property of their respective owners.
This product is not a toy. Contains small parts that can be swallowed or inhaled. 14+

thedictroyers.com [f /thedictroyers](https://www.facebook.com/thedictroyers) [@ /thedictroyers](https://www.instagram.com/thedictroyers) info@thedictroyers.com





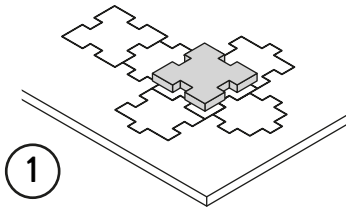
ORGANIZER - COMPATIBLE WITH THE VOYAGES OF MARCO POLO



TUTORIAL - THE DICETROYERS DICE!

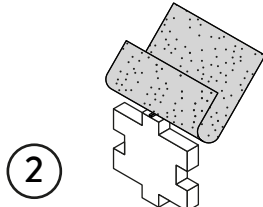
Among the pieces to assemble, you'll find a dice. This is not part of the organizer, but it can be a good starting point to practice!

Tra i materiali da assemblare troverai un dado. Questo componente non fa parte dell'organizer, né del gioco, ma è un ottimo punto di partenza per fare un po' di pratica.



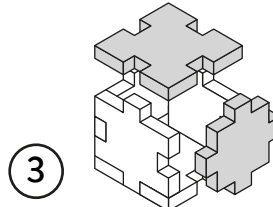
1

Gently take off
all the pieces.
Stacca delicatamente
dal foglio tutti i pezzi.



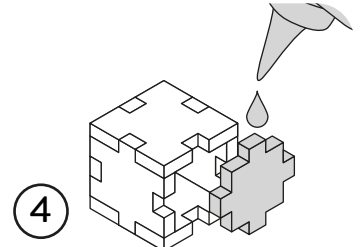
2

If necessary, use sand paper to
smoothen the borders.
Se necessario rifila con carta
vetrata per legno eventuali
imperfezioni dei pezzi.



3

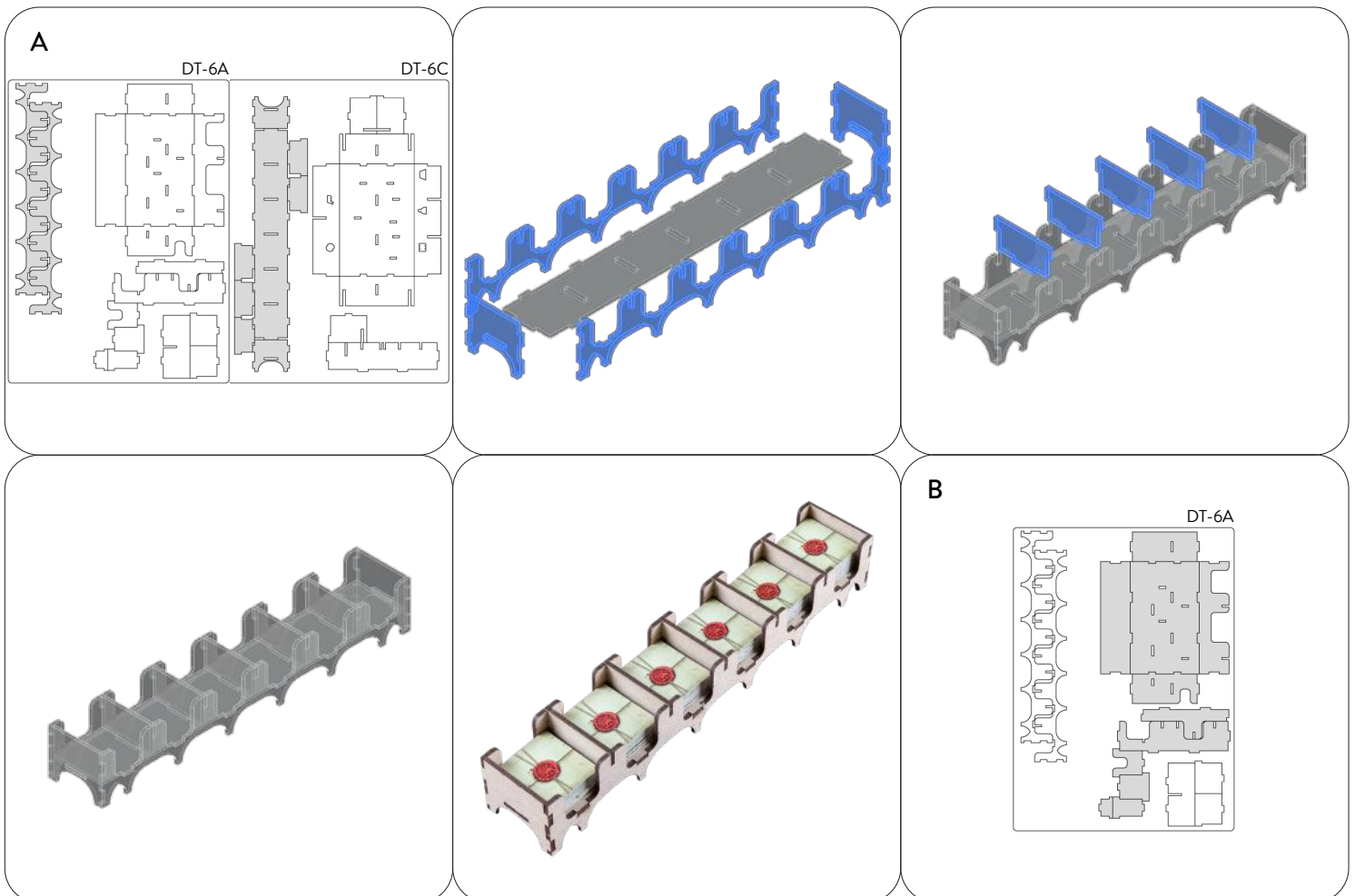
Get familiar with
all the pieces
and check the correct assembly
sequence.
Prendi familiarità con tutti
i pezzi, per assicurarti
che la sequenza di assemblaggio sia
corretta.

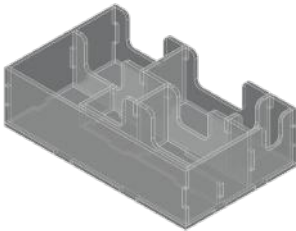
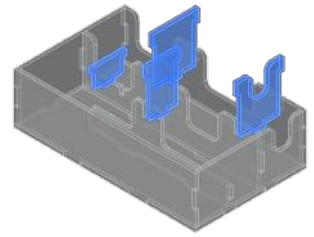
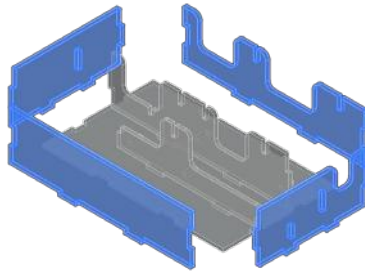
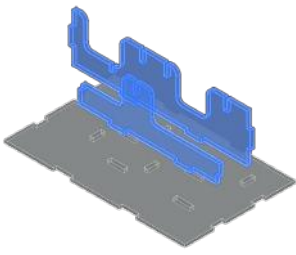


4

Once verified the correct assembly
sequence, just add a small quantity
of PVA glue on every joint.
Dopo aver verificato
la sequenza di assemblaggio
aggiungi una piccola quantità di
colla vinilica su tutti
gli incastri per garantirne
la durata nel tempo.

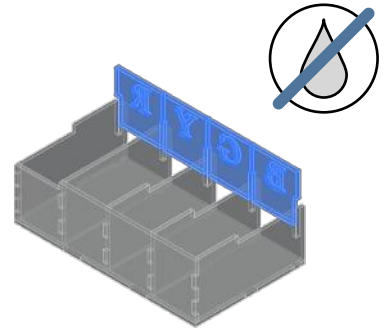
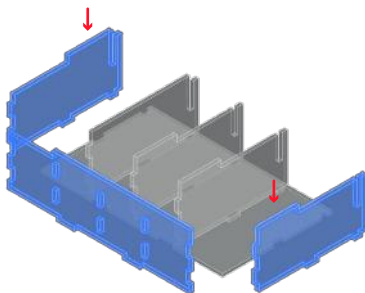
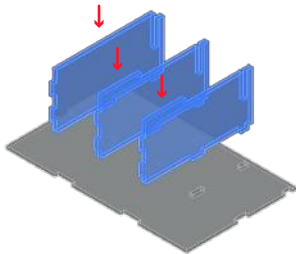
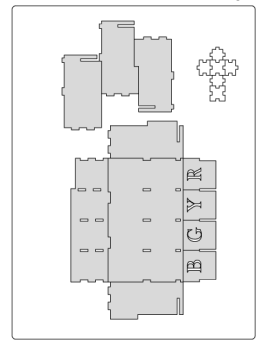
INSTRUCTIONS





C

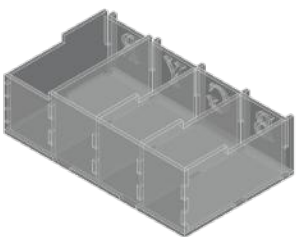
DT-6B



NOTE: Before assembling check carefully the shape of the joints. Controllate bene la forma degli incastri segnalati prima di assemblare il pezzo.

NOTE: Before assembling check carefully the shape of the joints. Controllate bene la forma degli incastri segnalati prima di assemblare il pezzo.

NOTE: Don't use glue on this joint; this piece can be removed during the game. Non usare colla su questo incastro, pezzo rimovibile durante il gioco.

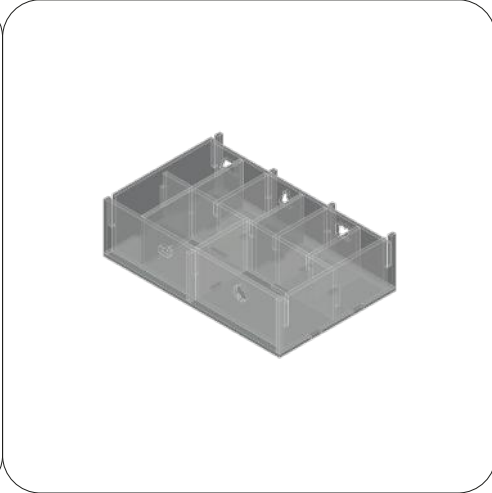
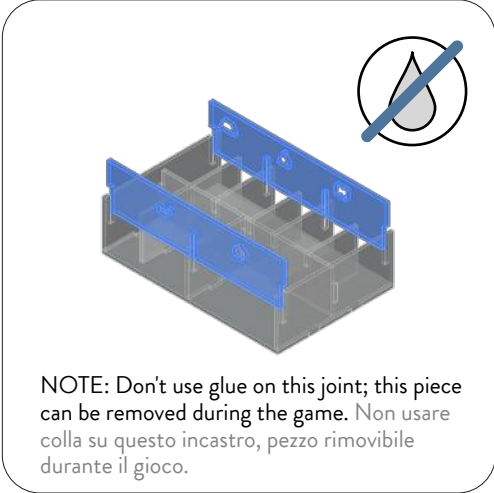
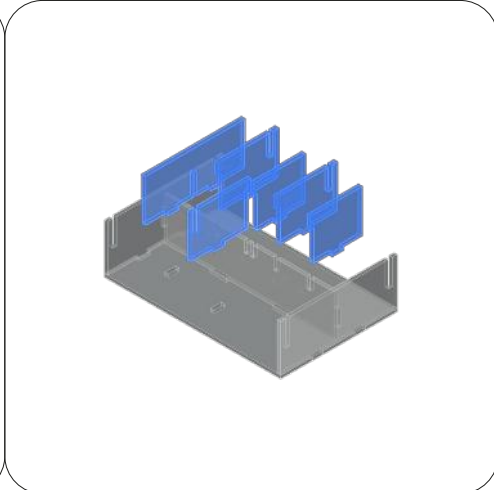
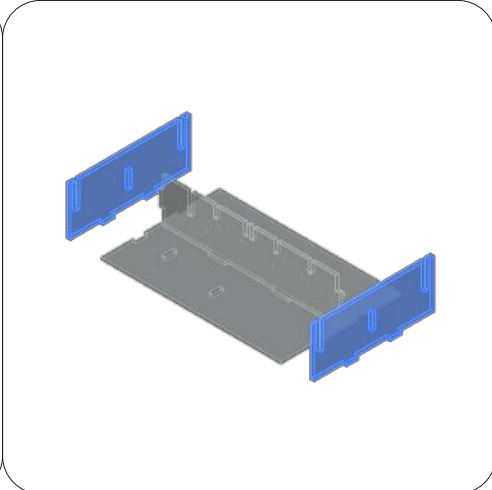
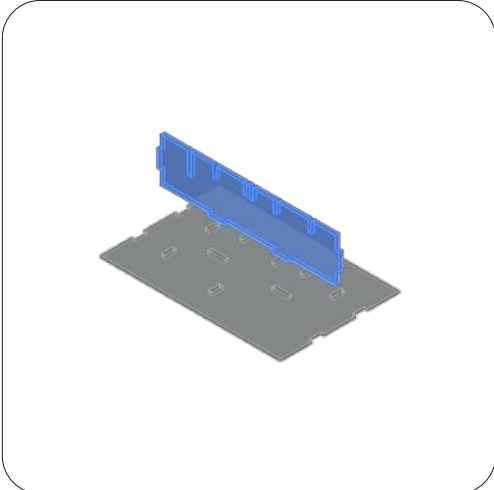


D

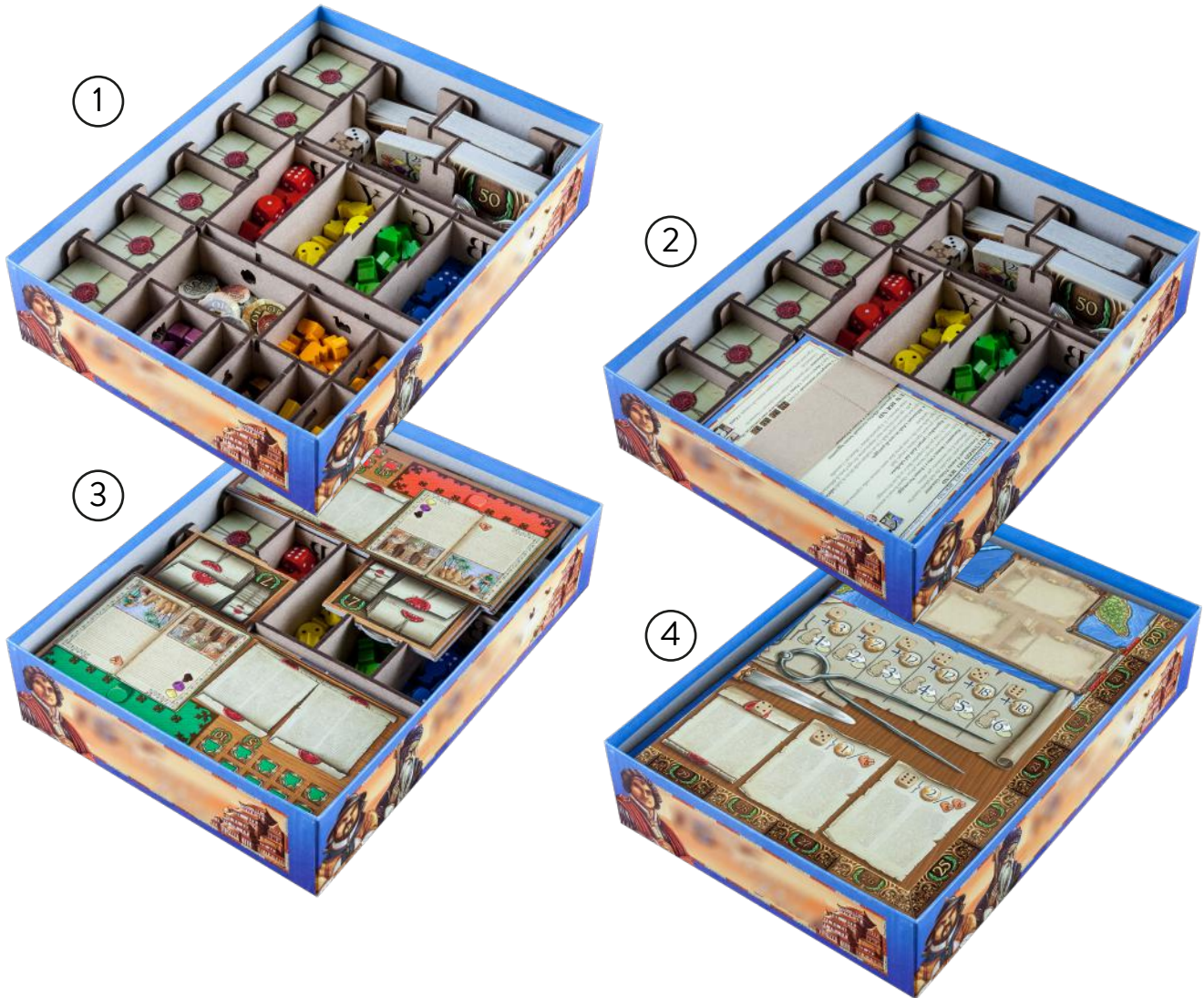
DT-6A

DT-6C





REBOXING SEQUENCE!



Every piece will stay in its slot. Follow the reboxing sequence to properly store your organizer. We recommend using a h-band to avoid accidental box opening. Don't shake. Ogni componente rimarrà al suo posto. Segui la sequenza di reinserimento per riporre nella maniera corretta il tuo organizer. Consigliamo l'utilizzo di una h-band per evitare aperture accidentali. Non scuotere.



All trademarks and copyrights are the property of their respective owners.
This product is not a toy. Contains small parts that can be swallowed or inhaled. 14+