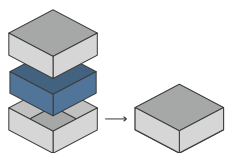




## ORGANIZER - COMPATIBLE WITH BLOOD RAGE - RETAIL EDITION



Designed to fit into the game box; flush closure is guaranteed. Progettato per inserirsi all'interno della scatola del gioco; garantisce chiusura a filo\*



Designed for both sleeved and unsleeved cards. Adatto sia per carte imbustate che non imbustate\*

142



Pieces to assemble  
Pezzi da assemblare

29.5 x 29.5 x 9.9 cm

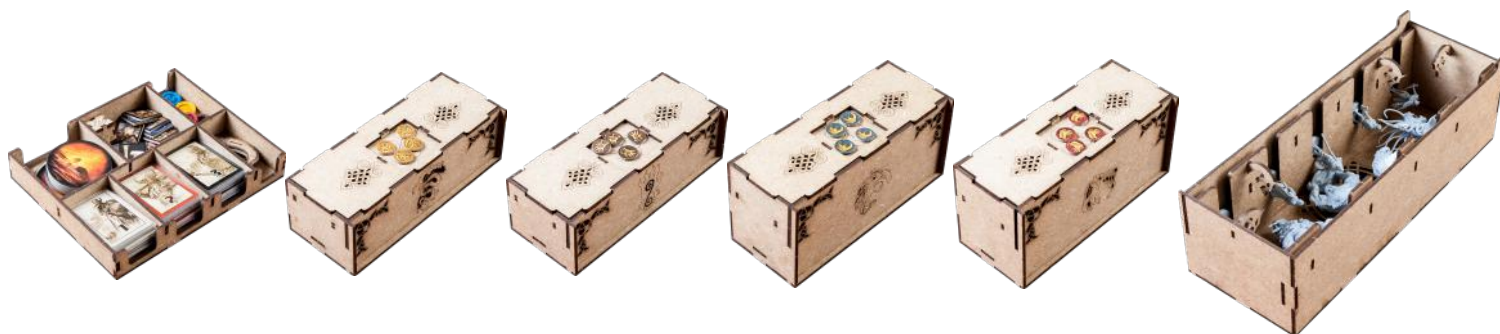


Size of assembled organiser  
Dimensioni organizer assemblato

### ORGANIZER CAPACITY

1x box for monster minis: 4 big monster minis +5 small monster minis; 4x clan boxes with separated spaces for: position token, colored bases, clanmaster, ships and warriors; 1x token and card box: 3 spaces for cards (can host up to 110 sleeved cards - 60micron eg Sapphire ), 1 space for plundering tokens, era, saga, 1 space for glory tokens, 1 space for first player token, 1 space for ragnarok tokens.

1x portaminature mostri: 4 miniature mostri grandi + 5 miniature mostri piccoli; 4x scatole portaclan, con alloggiamenti separati per: token posizione, basi colorate, miniature capoclan, nave e guerrieri; 1x scatola portatoken e carte: 3 alloggiamenti per carte era (possono contenere fino a 110 carte imbustate 60 micron -eg. Sapphire-), 1 per segnalini saccheggio, era, saga, 1 per segnalini gloria, 1 per segnalino primo giocatore, 1 per segnalini ragnarok.



\* Any doubt?  
Check out our FAQ page  
or download the digital  
version of the instructions  
on our website!

All trademarks and copyrights are the property of their respective owners.  
This product is not a toy. Contains small parts that can be swallowed or inhaled. 14+

[thedictroyers.com](http://thedictroyers.com)



[/thedictroyers](https://www.facebook.com/thedictroyers)



[/thedictroyers](https://www.instagram.com/thedictroyers)



[info@thedictroyers.com](mailto:info@thedictroyers.com)



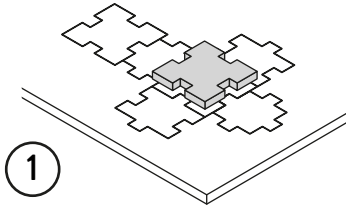


## ORGANIZER - COMPATIBLE WITH BLOOD RAGE - RETAIL EDITION

### TUTORIAL - THE DICETROYERS DICE!

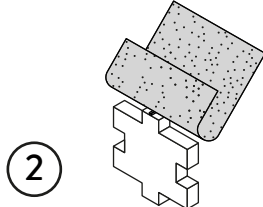
Among the pieces to assemble, you'll find a dice. This is not part of the organizer, but it can be a good starting point to practice!

Tra i materiali da assemblare troverai un dado. Questo componente non fa parte dell'organizer, né del gioco, ma è un ottimo punto di partenza per fare un po' di pratica.



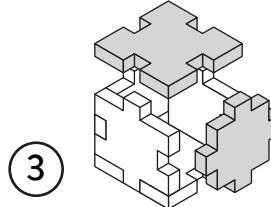
1

Gently take off  
all the pieces.  
Stacca delicatamente  
dal foglio tutti i pezzi.



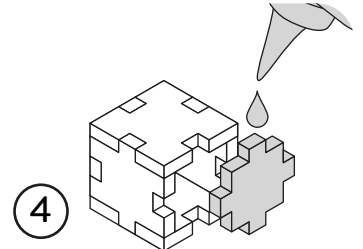
2

If necessary, use sand paper to  
smoothen the borders.  
Se necessario rifila con carta  
vetrata per legno eventuali  
imperfezioni dei pezzi.



3

Get familiar with  
all the pieces  
and check the correct assembly  
sequence.  
Prendi familiarità con tutti  
i pezzi, per assicurarti  
che la sequenza di assemblaggio sia  
corretta.

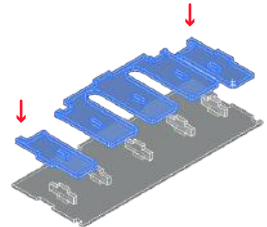
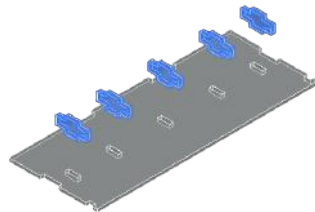
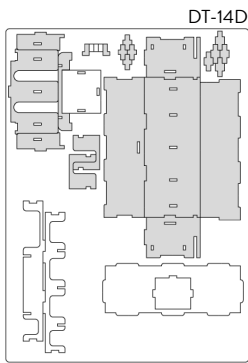


4

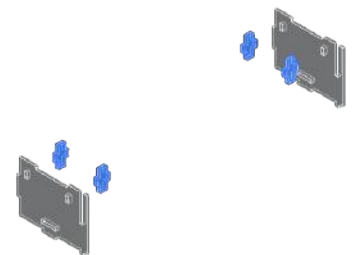
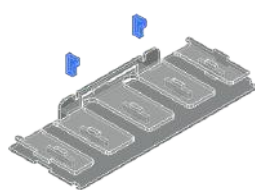
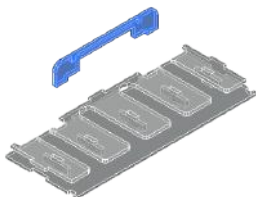
Once verified the correct assembly  
sequence, just add a small quantity  
of PVA glue on every joint.  
Dopo aver verificato  
la sequenza di assemblaggio  
aggiungi una piccola quantità di  
colla vinilica su tutti  
gli incastri per garantirne  
la durata nel tempo.

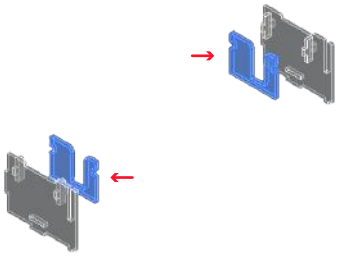
### INSTRUCTIONS

A

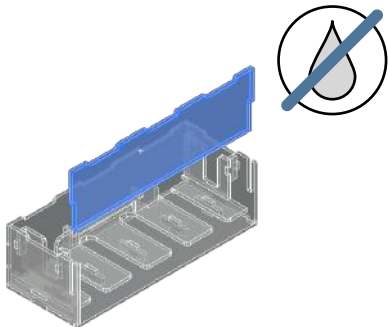
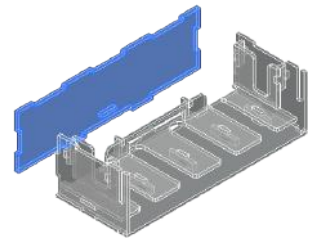
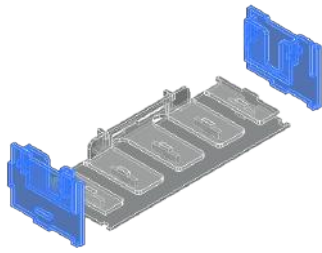


**NOTE:** Before assembling, carefully check  
the shape of these joints. Controllate bene la  
forma degli incastri segnalati prima di  
assemblare il pezzo.

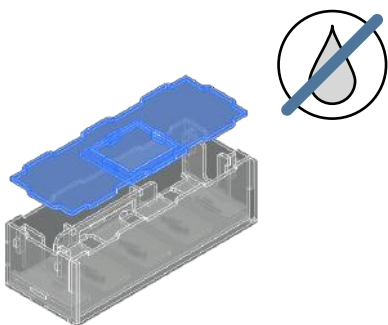
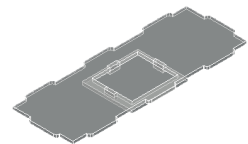
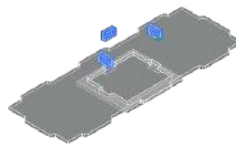
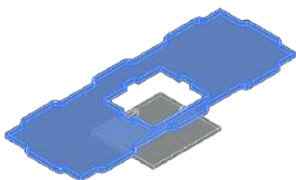
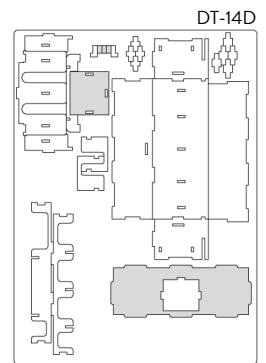
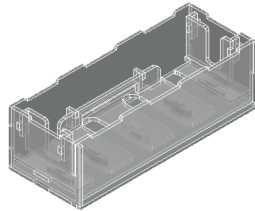




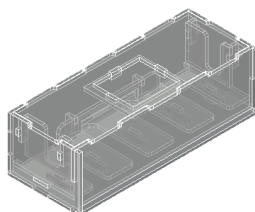
NOTE: Before assembling, carefully check the shape of these joints. Controllate bene la forma degli incastri segnalati prima di assemblare il pezzo.



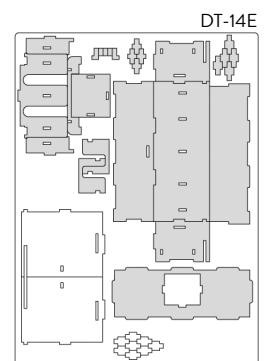
NOTE: Don't use glue on this joint; this piece can be removed during the game. Non usare colla su questo incastro, pezzo rimovibile durante il gioco.

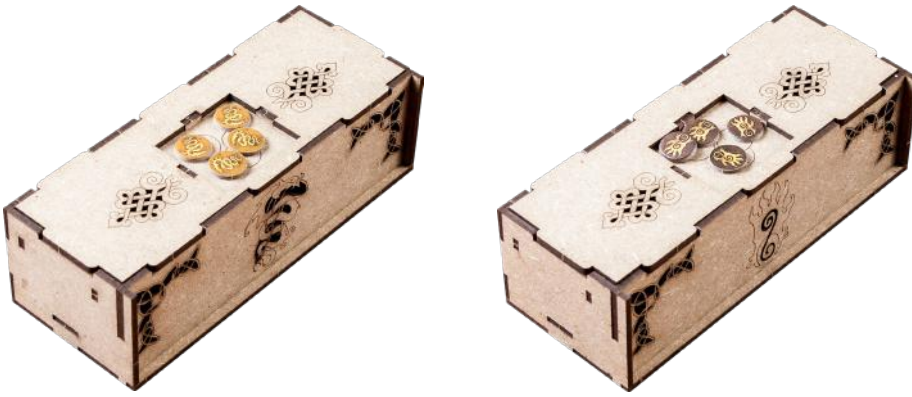


NOTE: Don't use glue on this joint; this piece can be removed during the game. Non usare colla su questo incastro, pezzo rimovibile durante il gioco.

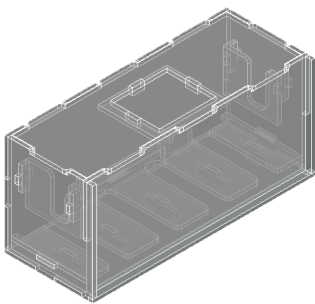
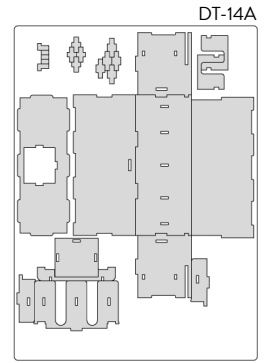


x2

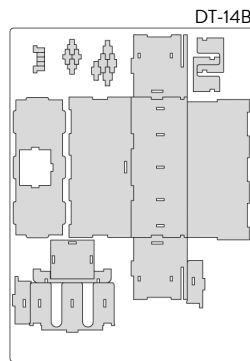




B



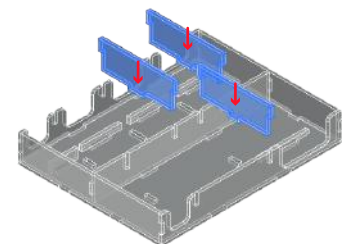
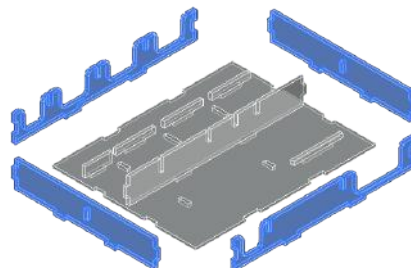
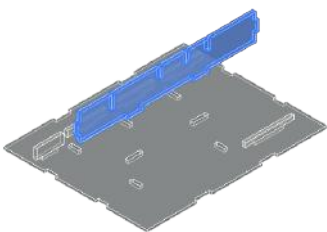
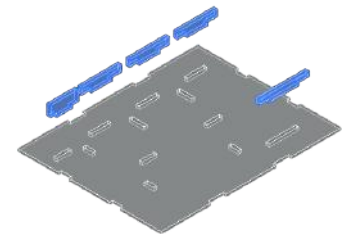
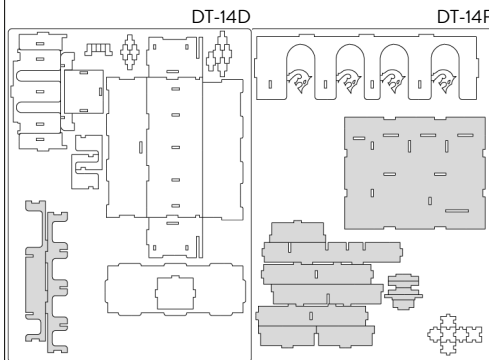
x2



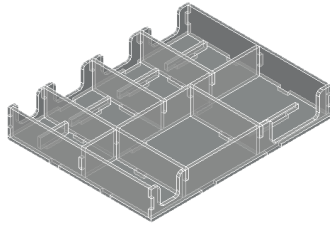
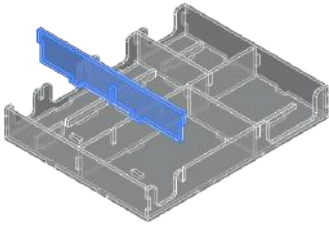
NOTE: The assembly sequence of the large boxes is the same as for the small boxes. La sequenza di montaggio delle scatole grandi è uguale a quella usata per le scatole piccole



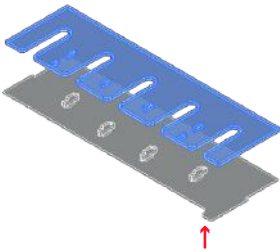
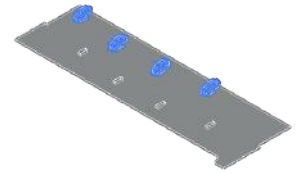
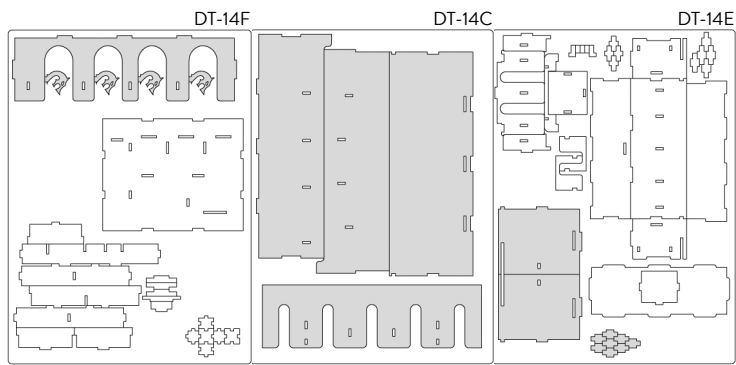
C



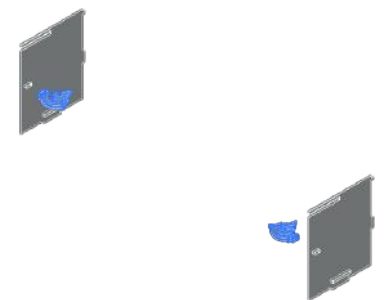
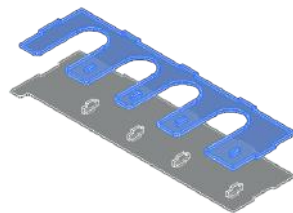
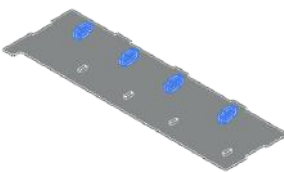
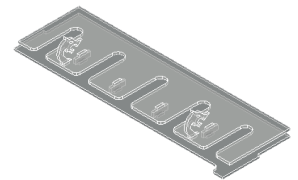
NOTE: Before assembling, carefully check the shape of these joints. Controllate bene la forma degli incastri segnalati prima di assemblare il pezzo.

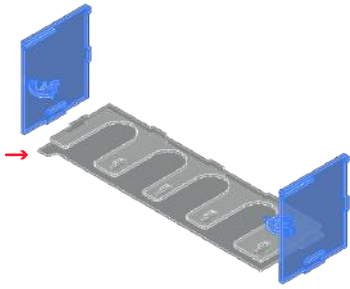


D

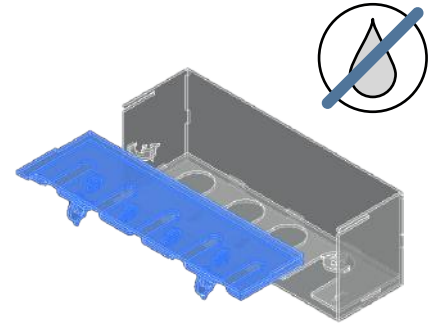
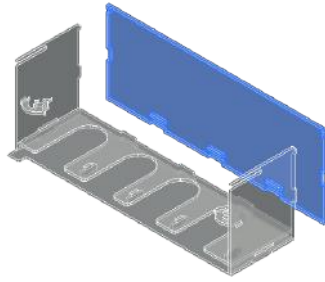


**NOTE:** Before assembling, carefully check the shape of these joints. Controllate bene la forma degli incastri segnalati prima di assemblare il pezzo.

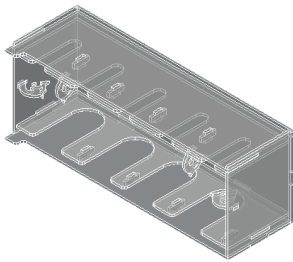




NOTE: Before assembling, carefully check the shape of these joints. Controllate bene la forma degli incastri segnalati prima di assemblare il pezzo.



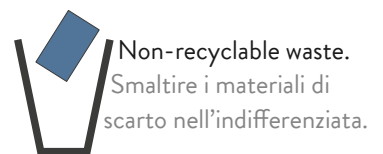
NOTE: Don't use glue on this joint; this piece can be removed during the game. Non usare colla su questo incastro, pezzo rimovibile durante il gioco.



## REBOXING SEQUENCE!



Every piece will stay in its slot. Follow the reboxing sequence to properly store your organizer. We recommend using a h-band to avoid accidental box opening. Don't shake. Ogni componente rimarrà al suo posto. Segui la sequenza di reinserimento per riporre nella maniera corretta il tuo organizer. Consigliamo l'utilizzo di una h-band per evitare aperture accidentali. Non scuotere.



All trademarks and copyrights are the property of their respective owners.  
This product is not a toy. Contains small parts that can be swallowed or inhaled. 14+